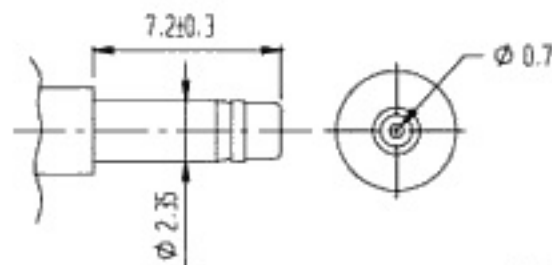
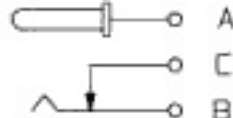


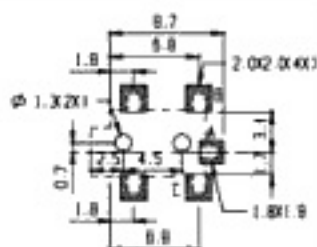
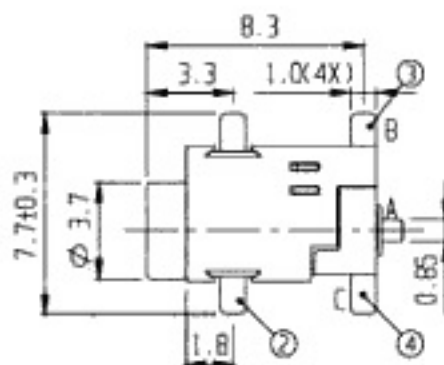
CENTER PIN DIAMETER:  $\varnothing 0.65\text{mm}$



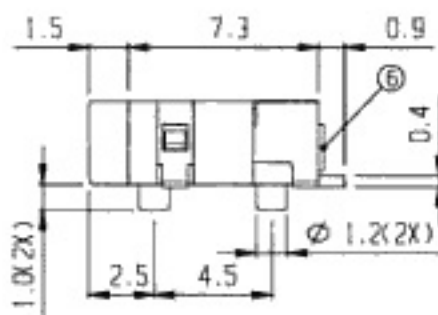
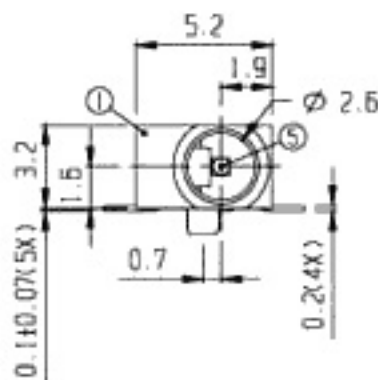
RoHS  
Compliance



SCHEMATIC



P.C.B. LAYOUT



5	CENTER PIN	BRASS	1	Ag PLATED	6	STOPPER	SUS	1	Ag PLATED
3	TERMINAL	P B S	1	Ag PLATED	4	TERMINAL	BRASS	1	Ag PLATED
1	FRAME	NYLON 6T	1	BLACK	2	TERMINAL	BRASS	2	Ag PLATED
NO.	PART	MATERIAL	QTY	REMARKS	NO.	PART	MATERIAL	QTY	REMARKS

ISSUED

SPECIFICATION

TITLE: DC POWER JACK SMD



RATING: DC 30V 0.3A  
 CONTACT RESISTANCE: 50mΩ max.  
 INSULATION RESISTANCE: 100MΩ AT 500V DC  
 WITHSTAND VOLTAGE: AC 250V for 1 minute  
 OPERATION FORCE: REFER ATTACH SPECIFICATION  
 SWITCHING LIFE: 5,000 cycles min.

MODEL NO: DCM-048

TOLERANCE	UNIT: MM	DWN.	hoo
UP TO 1.0:±0.1	SCALE: 4:1	CHK'D.	hm
1.0 TO 10.0:±0.2	VERSION: 1	APPD.	hoo
OVER 10.0:±0.3	DRWG NO:		