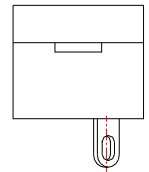
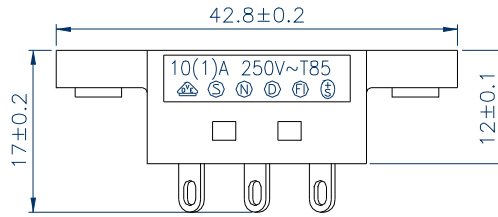
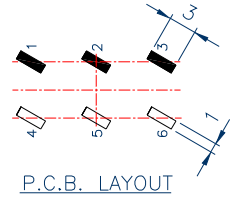
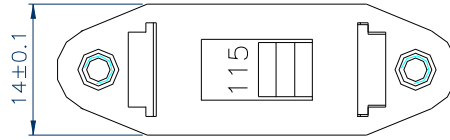


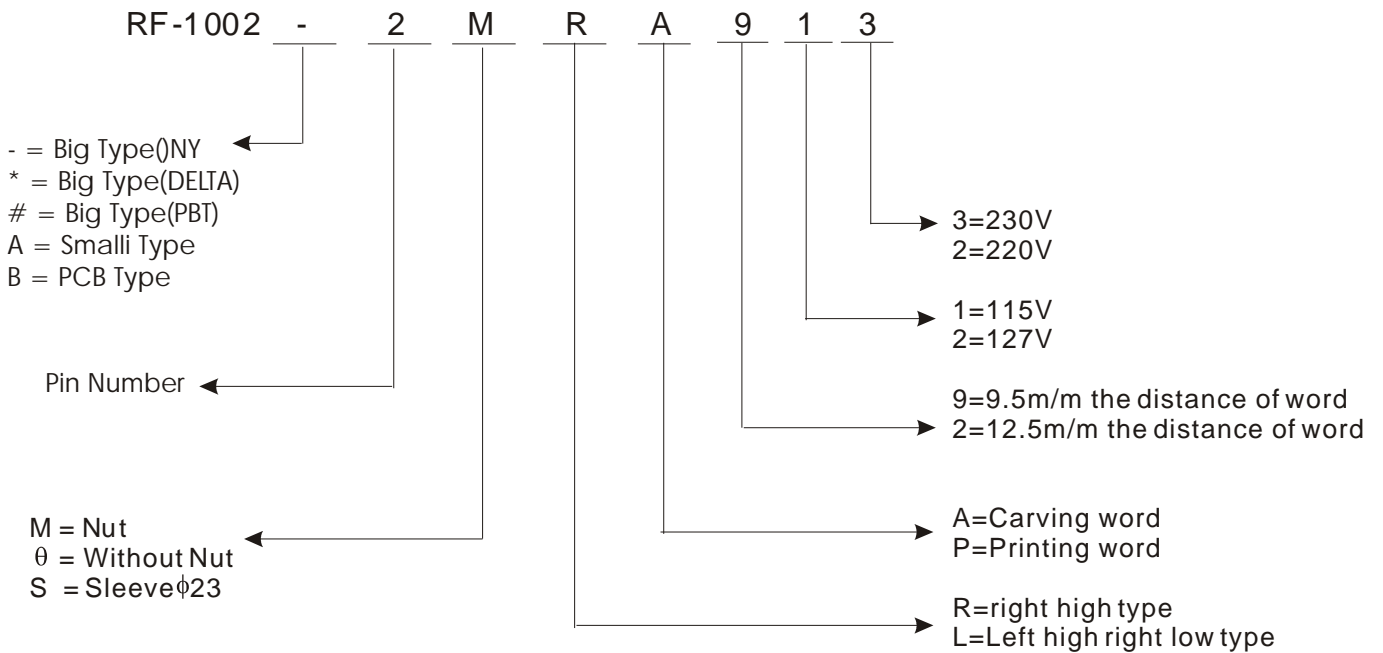
VOLTAGE SELECTOR



RF-1002

STANDARD :UL1054/IEC 65
 RATING :12A125V/12A250V AC
 APPROVALS :UL/CSA
 RATING :10(1)A250V AC T85
 APPROVALS :VDE/SEMKO/NEMKO/FIMKO/DEMKO/SEV

RF-1002 Oder Numbers



Byword : RF-1002-6MRP913
 6 Pin with Nut right high left low printing 115/230
 9.5mm of word distance