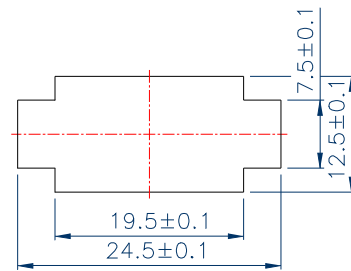
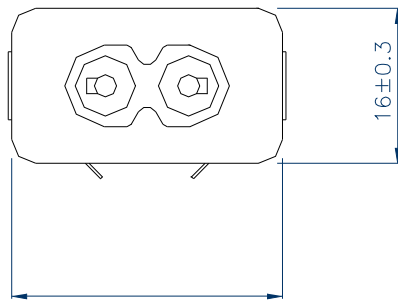


# AC SOCKET



## RF-180-C

STANDARD: IEC 320 C8  
RATING: 2.5A/250V AC  
APPROVALS: UL/CSA/VDE/ÖVE/SEV/  
DEMKO/NEMKO/SEMKO/FIMKO



PANEL COUOUT THICKNESS 0.6mm~1.5mm

