

# AC SOCKET

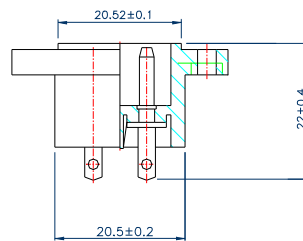
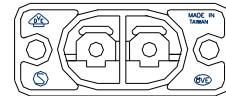
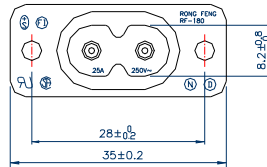


## RF-180

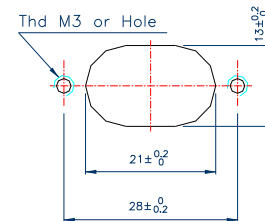
STANDARD : IEC 320 C8

RATING : 2.5A/250V AC

APPROVALS: UL/CSA/VDE/ÖVE/SEV/  
DEMKO/NEMKO/SEMKO/FIMKO



PANEL CUT-OUT



## RF-180 Oder Numbers

RF - 180

Low flow AC Socket

Customer nominated