

POWER INLET 5x20MM FUSE HOLDER



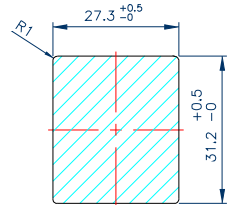
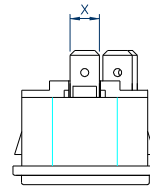
RF-2004-2.0

STANDARD: IEC 320-1 C14

RATING : 10A 250V AC

APPROVALS: UL/CSA/VDE/DEMKO/
NEMKO/SEMKO/FIMKO

	Y	X	MODE
RF-2004-	2.0	6.3	
		6.3	
	2.5-	4.8	
		4.0	
	3.0	2.8	



PANEL CUTOUT DIMENSION TABLE

