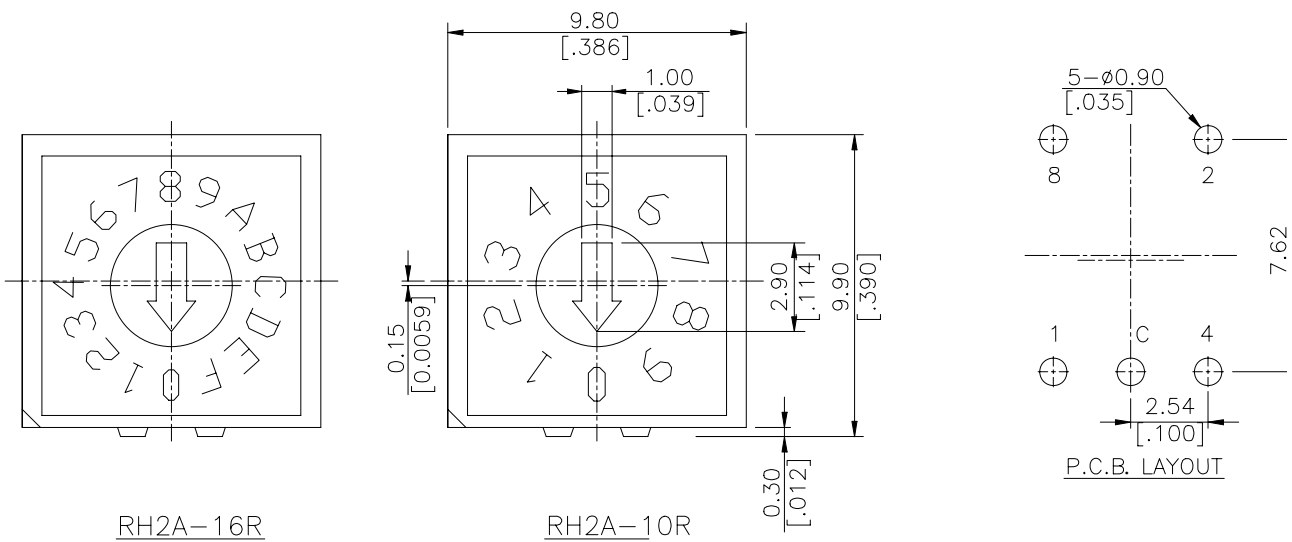


# ROTARY SERIES

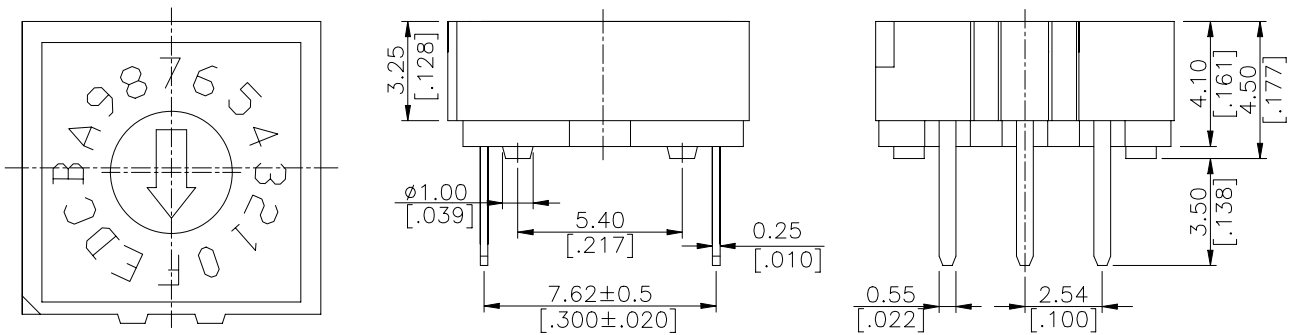
## DIMENSIONS

### RH2



RH2A-16R

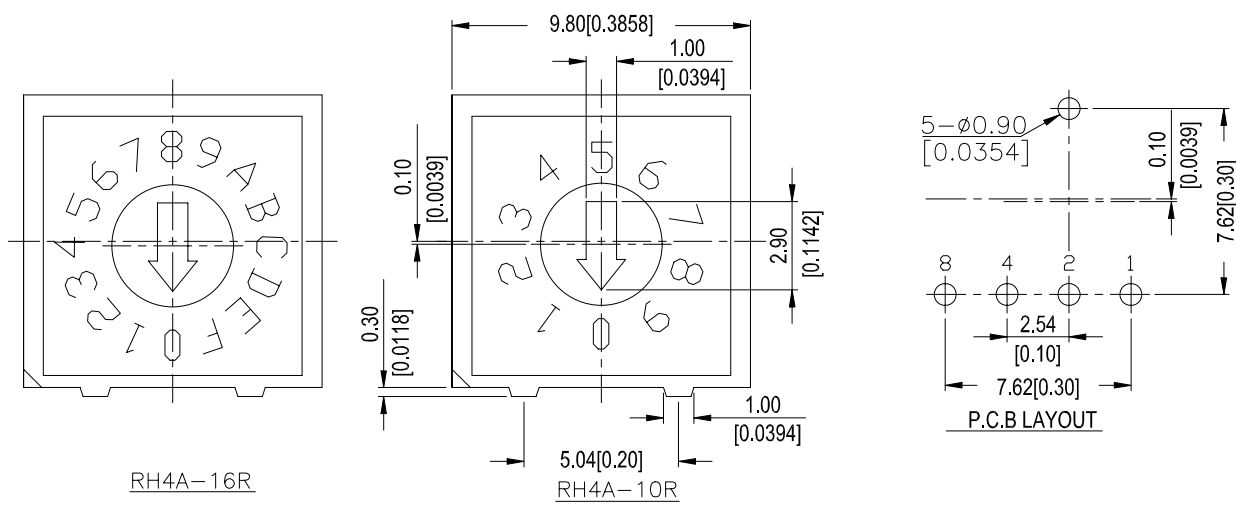
RH2A-10R



RH2A-16C

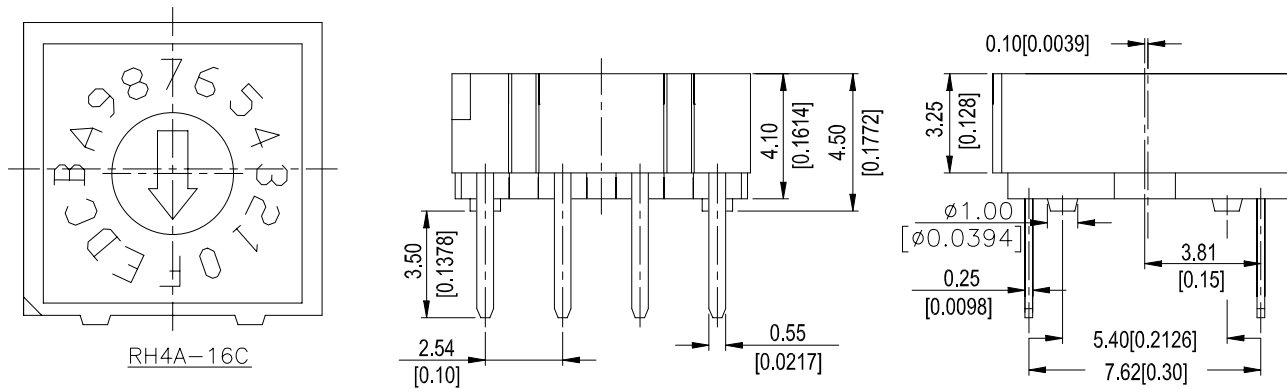
○ REAL CODE				
POSITION	CODE			
	1	2	4	8
0	●	●	●	●
1	○	●	●	●
2	●	○	●	●
3	○	○	●	●
4	●	●	○	●
5	○	●	○	●
6	●	○	○	●
7	○	○	○	●
8	●	●	●	○
9	○	●	●	○
A	●	○	●	○
B	○	○	●	○
C	●	●	○	○
D	○	●	○	○
E	●	○	○	○
F	○	○	○	○

### RH4

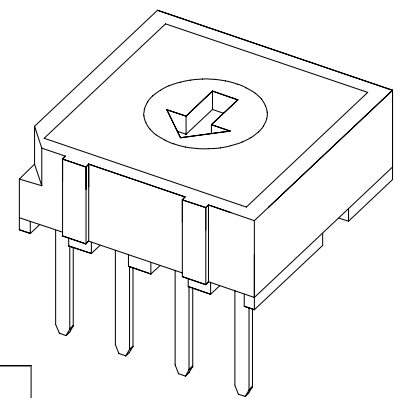


RH4A-16R

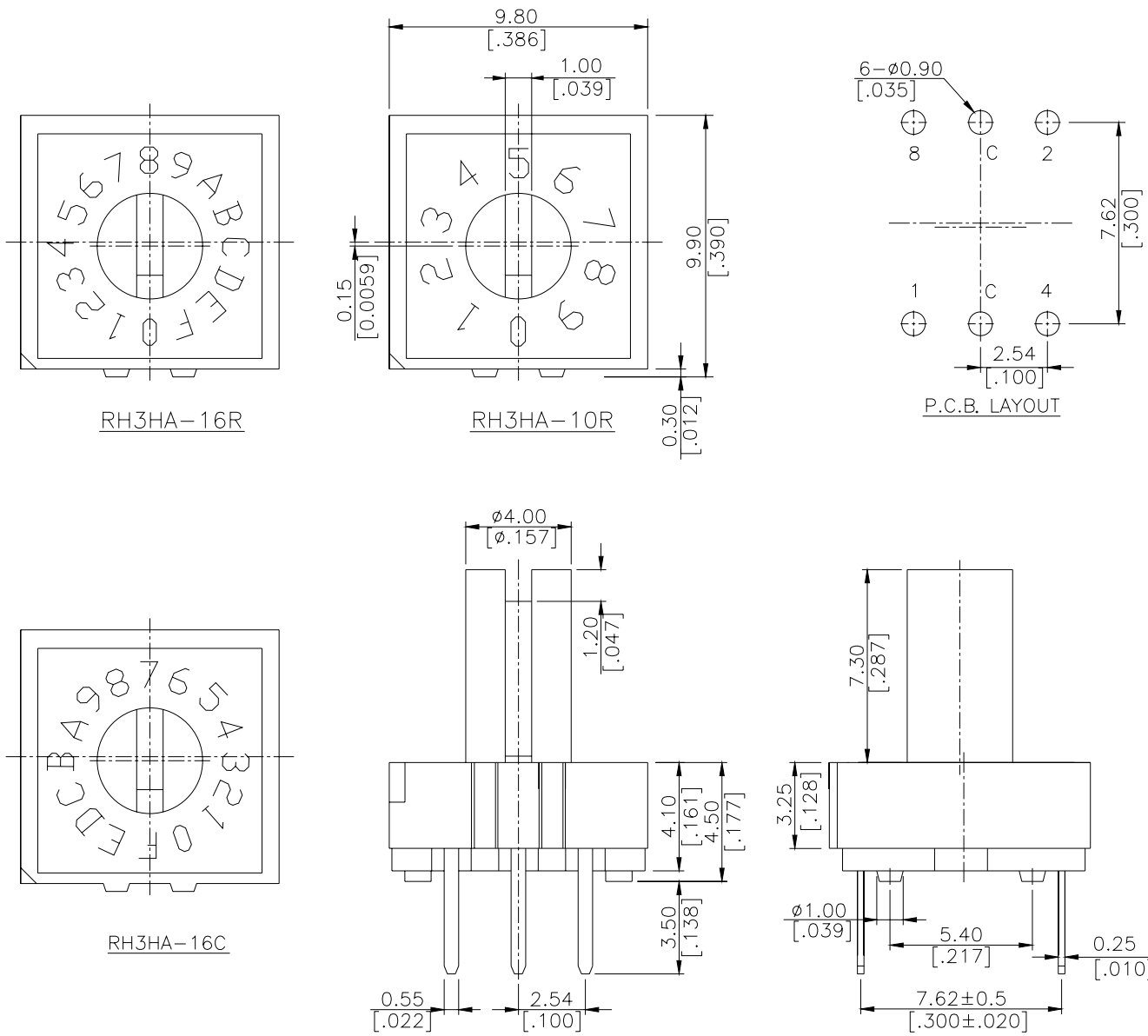
RH4A-10R



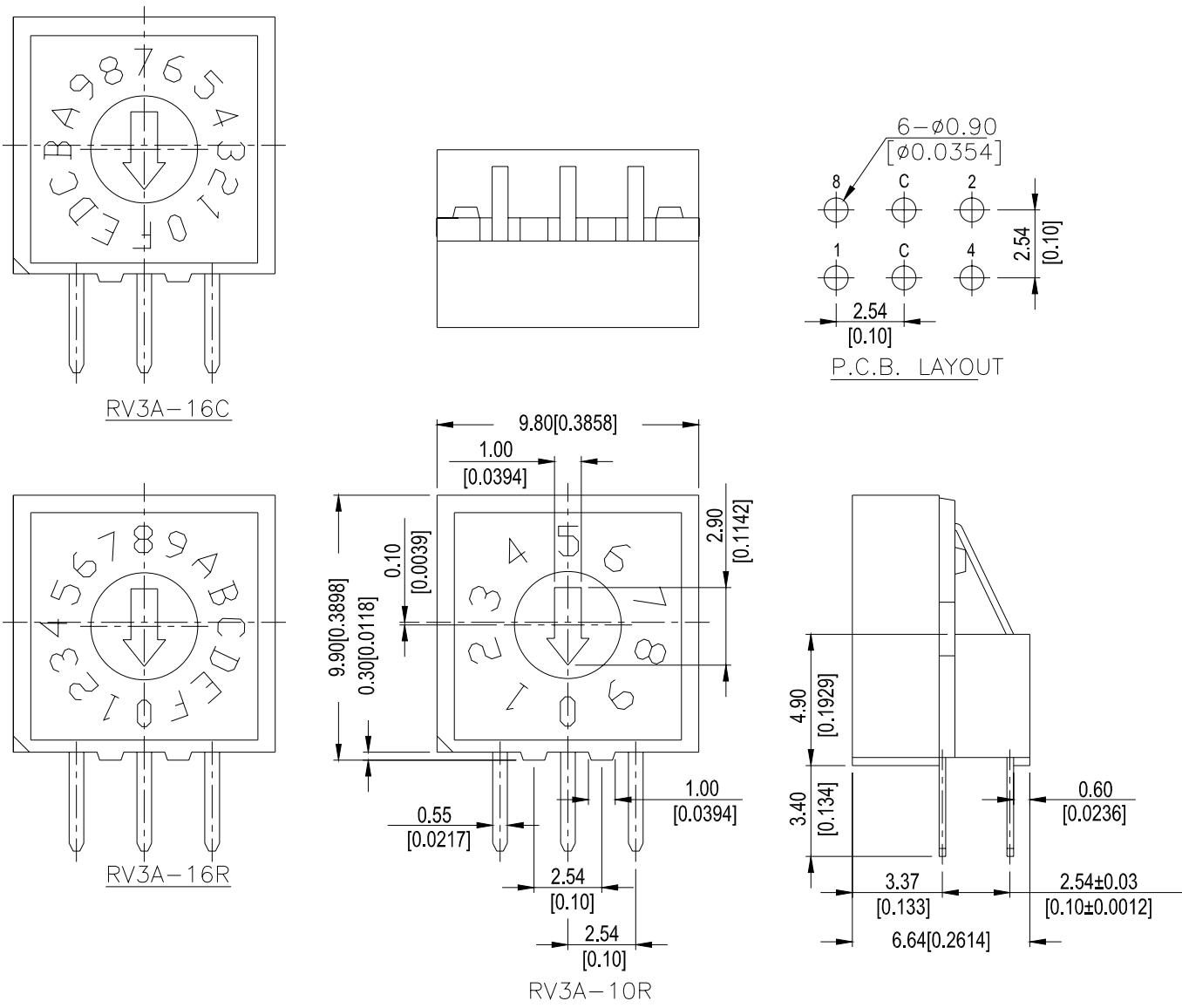
RH4A-16C



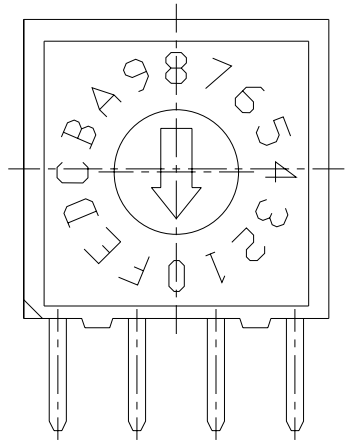
**RH3H**



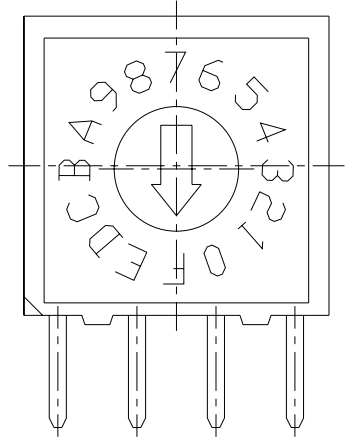
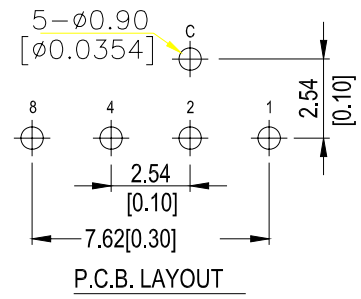
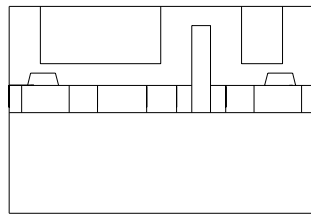
**RV3**



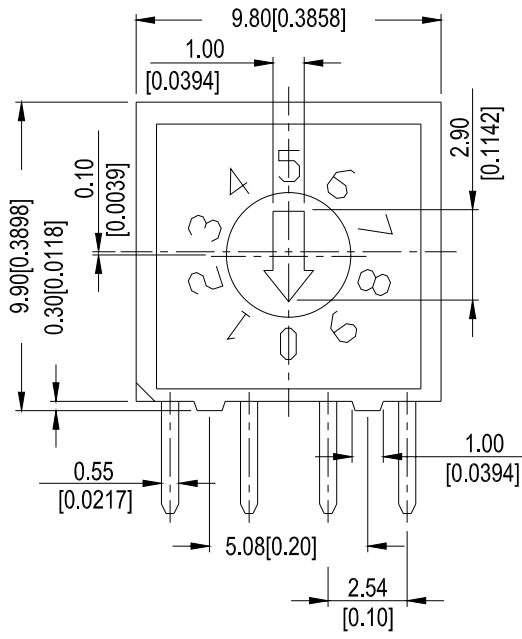
**RV4**



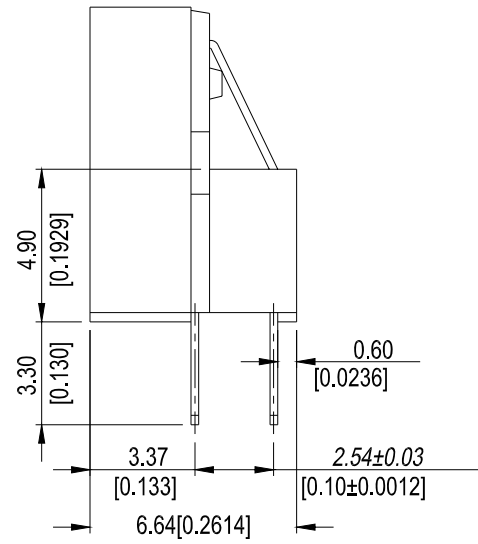
RV4A-16R



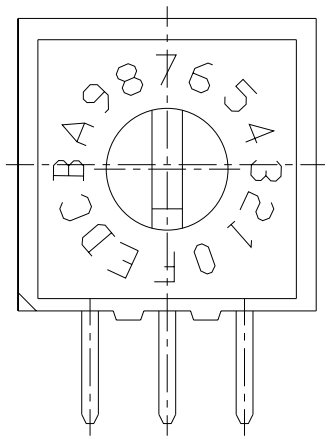
RV4A-16C



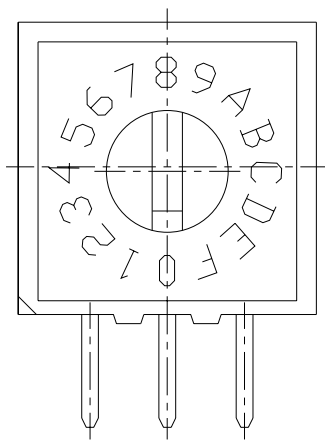
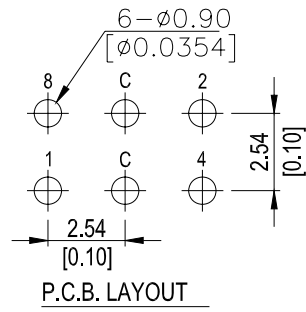
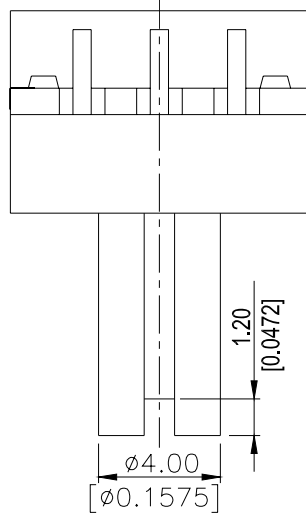
RV4A-10R



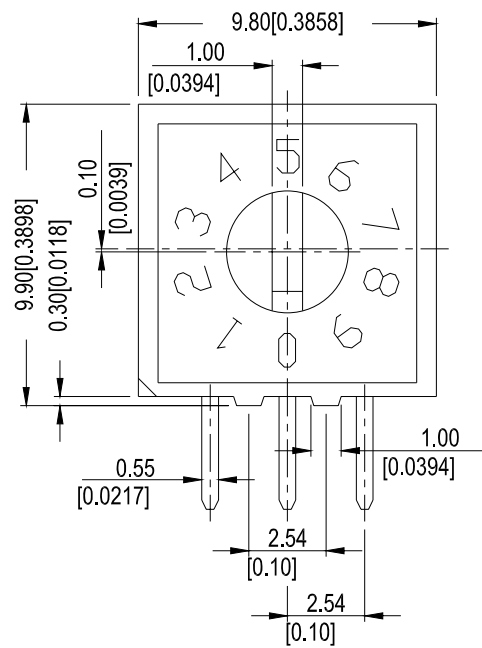
**RV3H**



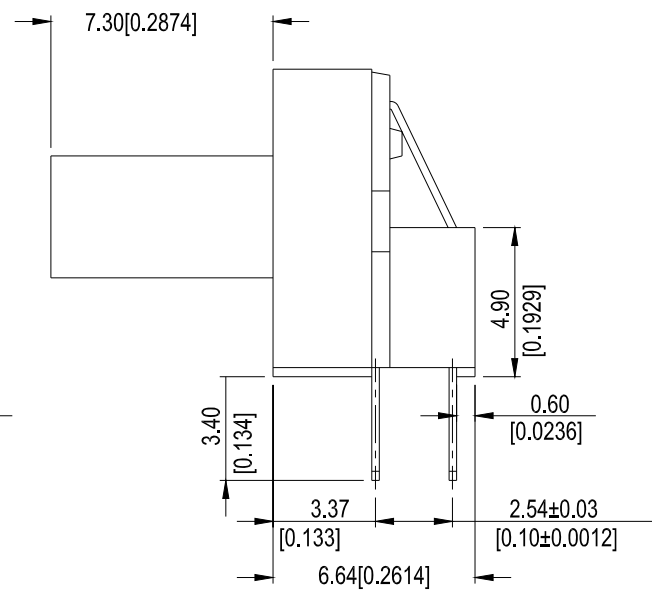
RV3HA-16C



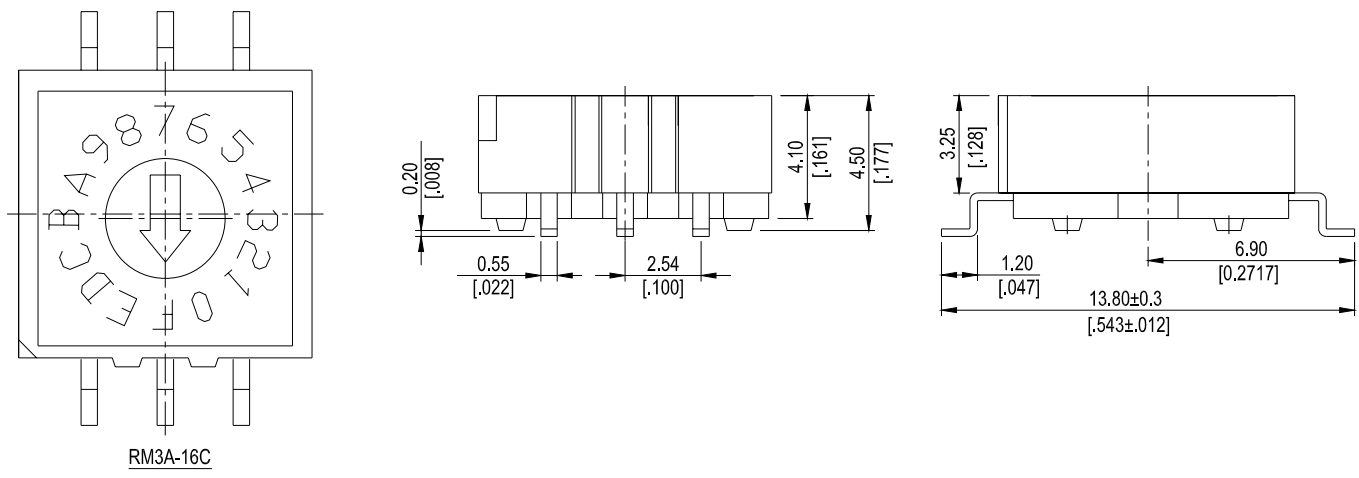
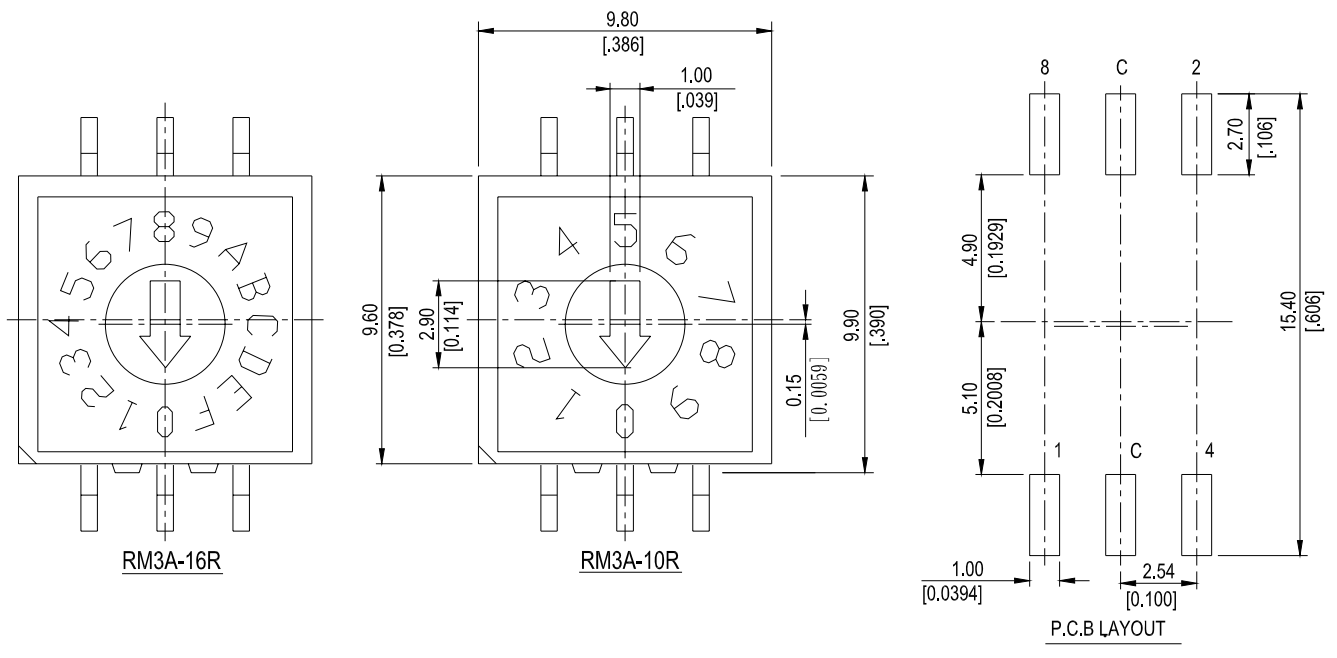
RV3HA-16R



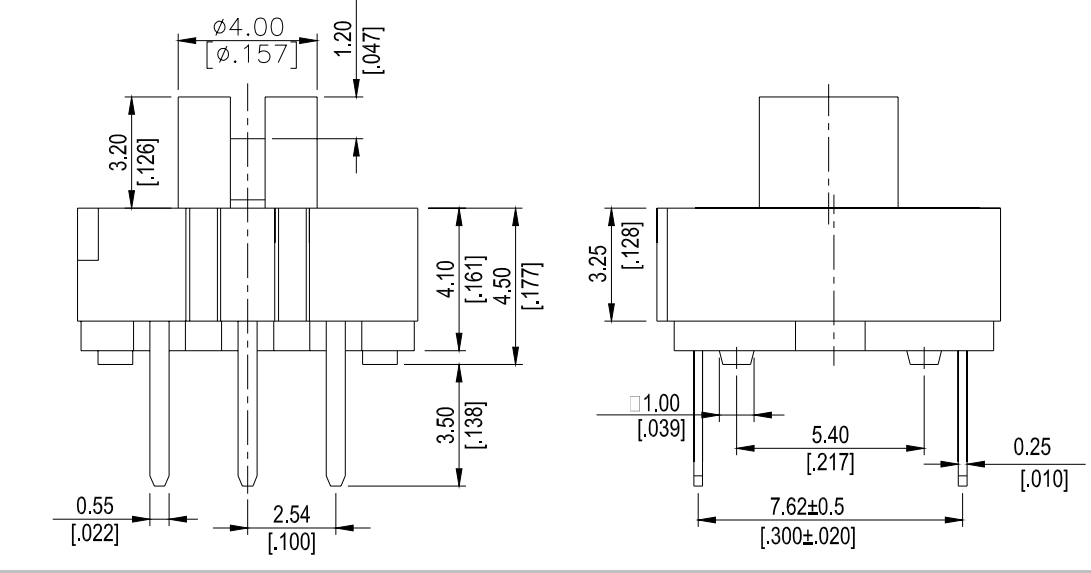
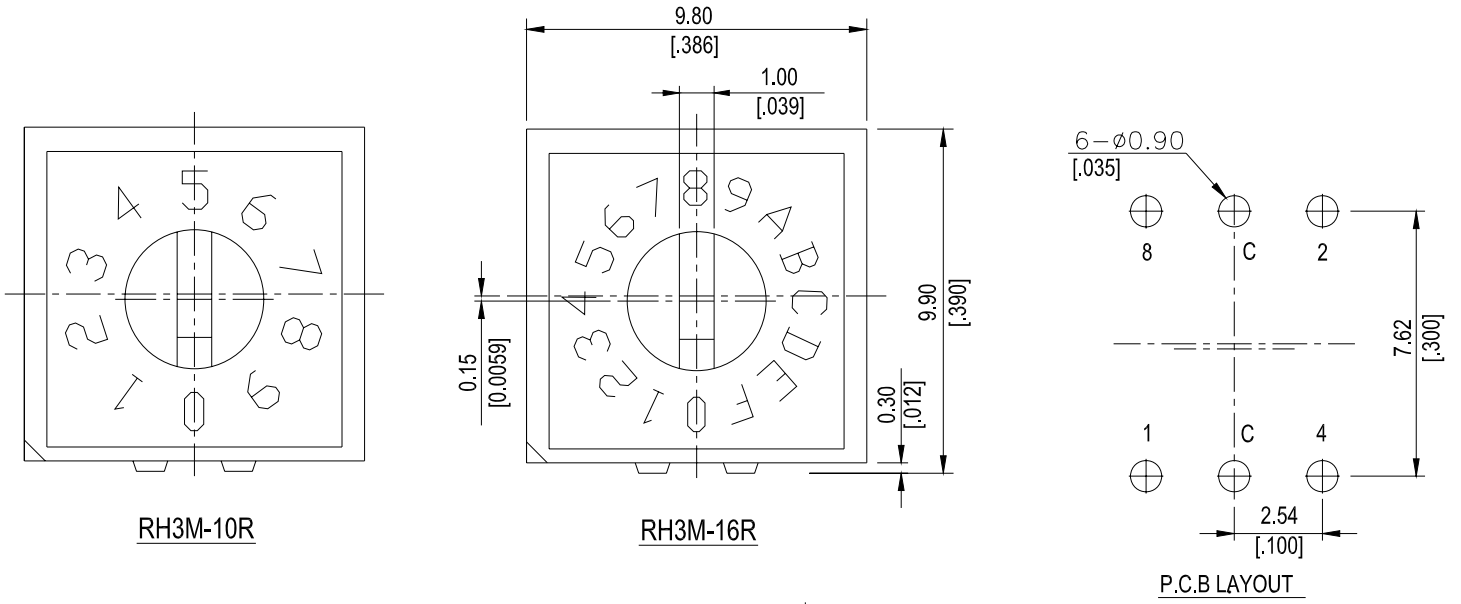
RV3HA-10R



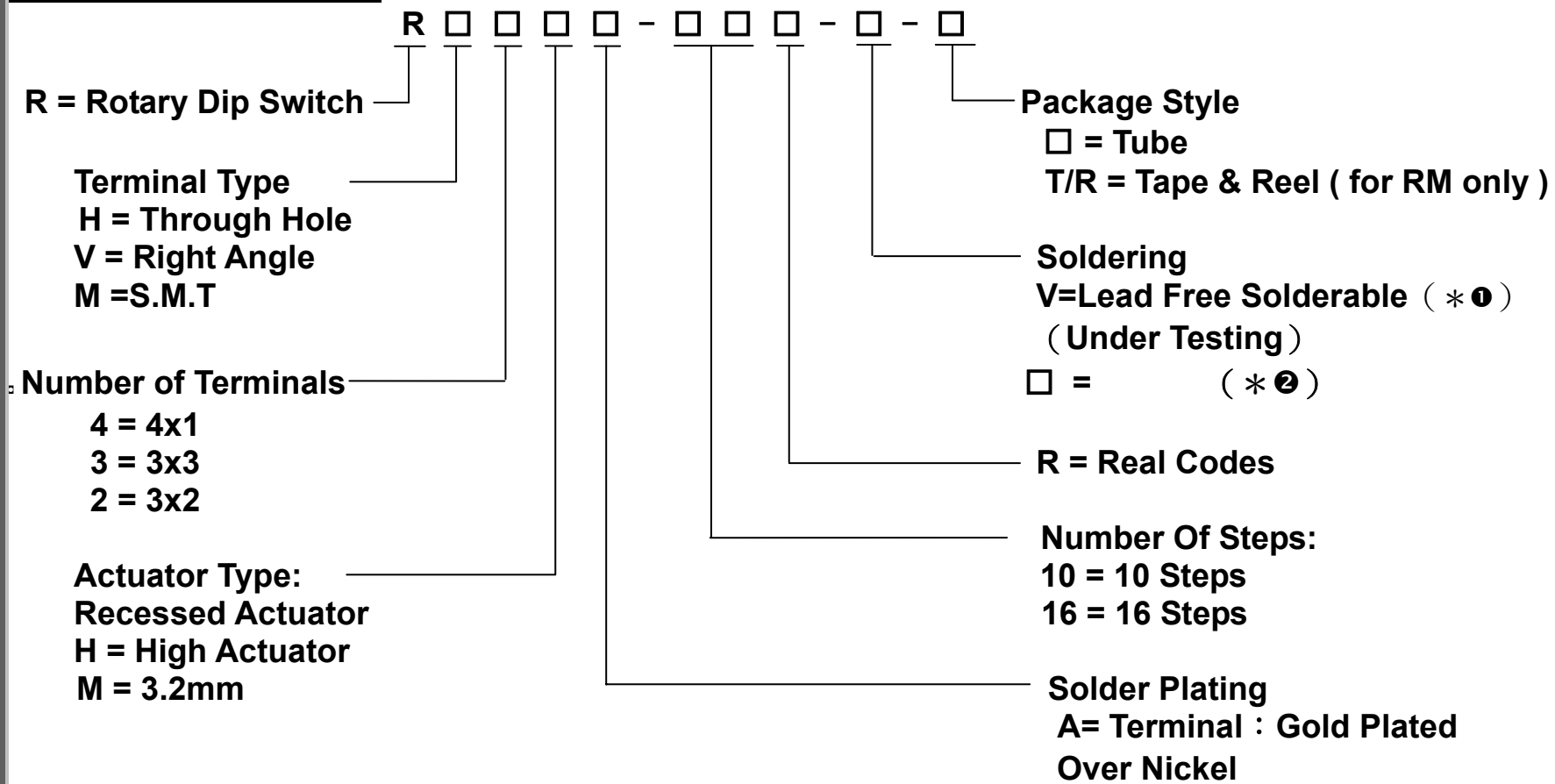
**RM3**



**RH3M**



# HOW TO ORDER



## SPECIFICATIONS

### △ MECHANICAL

Mechanical Life: 200mΩ max. 20,000 steps  
 Operating Force: 200gf Cm max.

### △ ENVIRONMENTAL

Operating Temperature: -25°C to +80°C  
 Storage Temperature: -40°C to +85°C

### △ ELECTRICAL

Electrical Life: 200mΩ max. 20,000 steps  
 Non-Switching Rating: 100mA, 50VDC  
 Switching Rating: 24VDC, 25mA  
 Contact Resistance: (a) 100mΩ max. (initial)  
 (b) 200mΩ (final – after test)  
 Insulation Resistance: 100MΩ min. at 250VDC  
 Voltage Proof: 250VAC for 1 minute

## MATERIALS

- △ **BASE & COVER:** UL 94V-0 Nylon Thermoplastic  
Color: Black
- △ **ACTUATOR:** UL 94V-0 LCP Thermoplastic  
Color: White
- △ **CONTACT:** Alloy copper with gold plated over nickel
- △ **TERMINAL:** Brass with gold plated

## SOLDERING PROCESS

( \* ① )

ITEM	LEAD-FREE SOLDERING CONDITIONS
HAND SOLDERING	350°C ± 10°C / 3sec max
WAVE SOLDERING	Pre-Heat 100°C / 60sec 260°C ± 5°C max / 5~10sec
REFLOW SOLDERING	

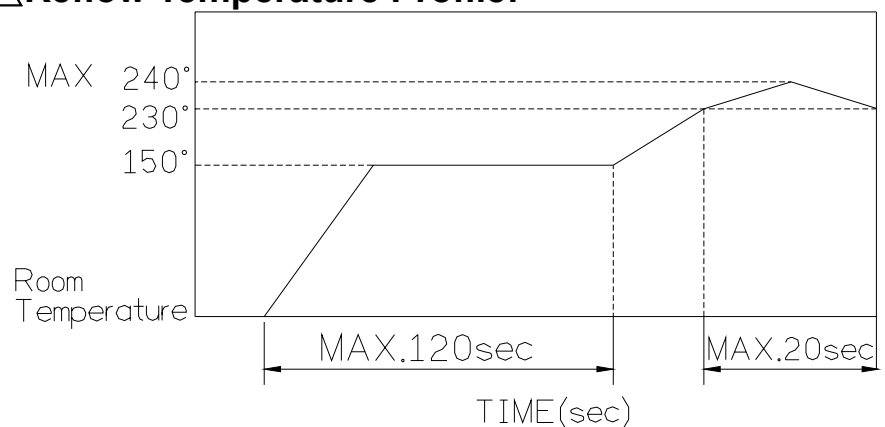
( \* ② )

△ **HAND SOLDERING :** Use a soldering iron of 30 watts, controlled at (350°C) approximately max 3 seconds.

△ **WAVE SOLDERING:** Recommended temperature at 500°F (260°C) max. 5 seconds. (For through hole type).

△ **REFLOW SOLDERING:** When applying reflow soldering the peak temperature of the reflow oven should be set at 240°C max.

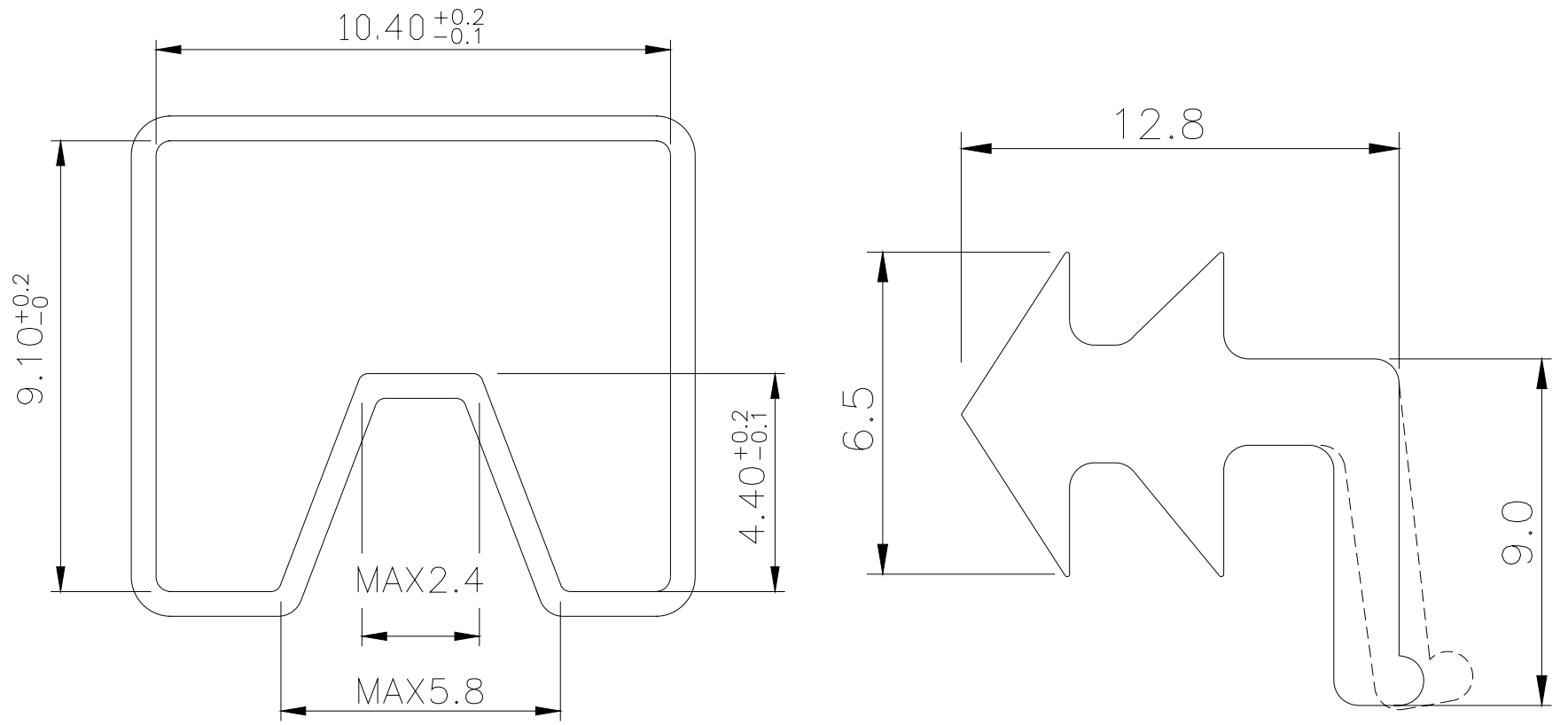
### △ Reflow Temperature Profile:



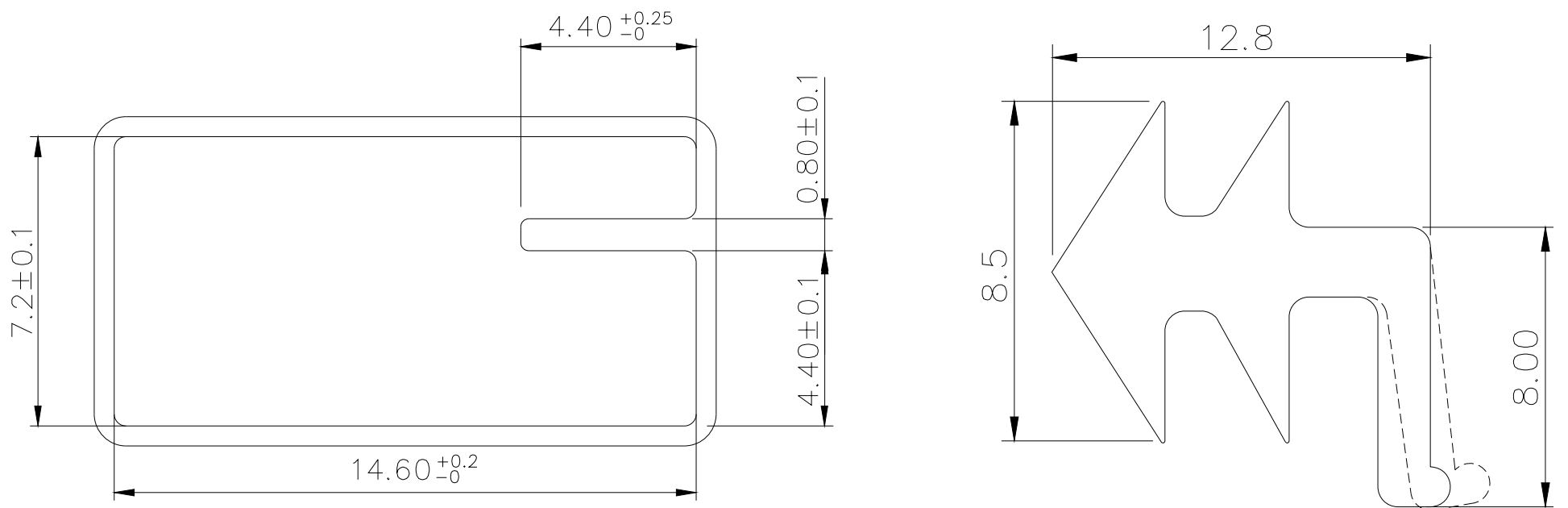
# PACKING

Part Number	Number Per Tube	Number Per Reel
RH-	48	
RH-H	48	
RV-	48	
RV-H	48	
RM-	48	750
RM-H	48	250

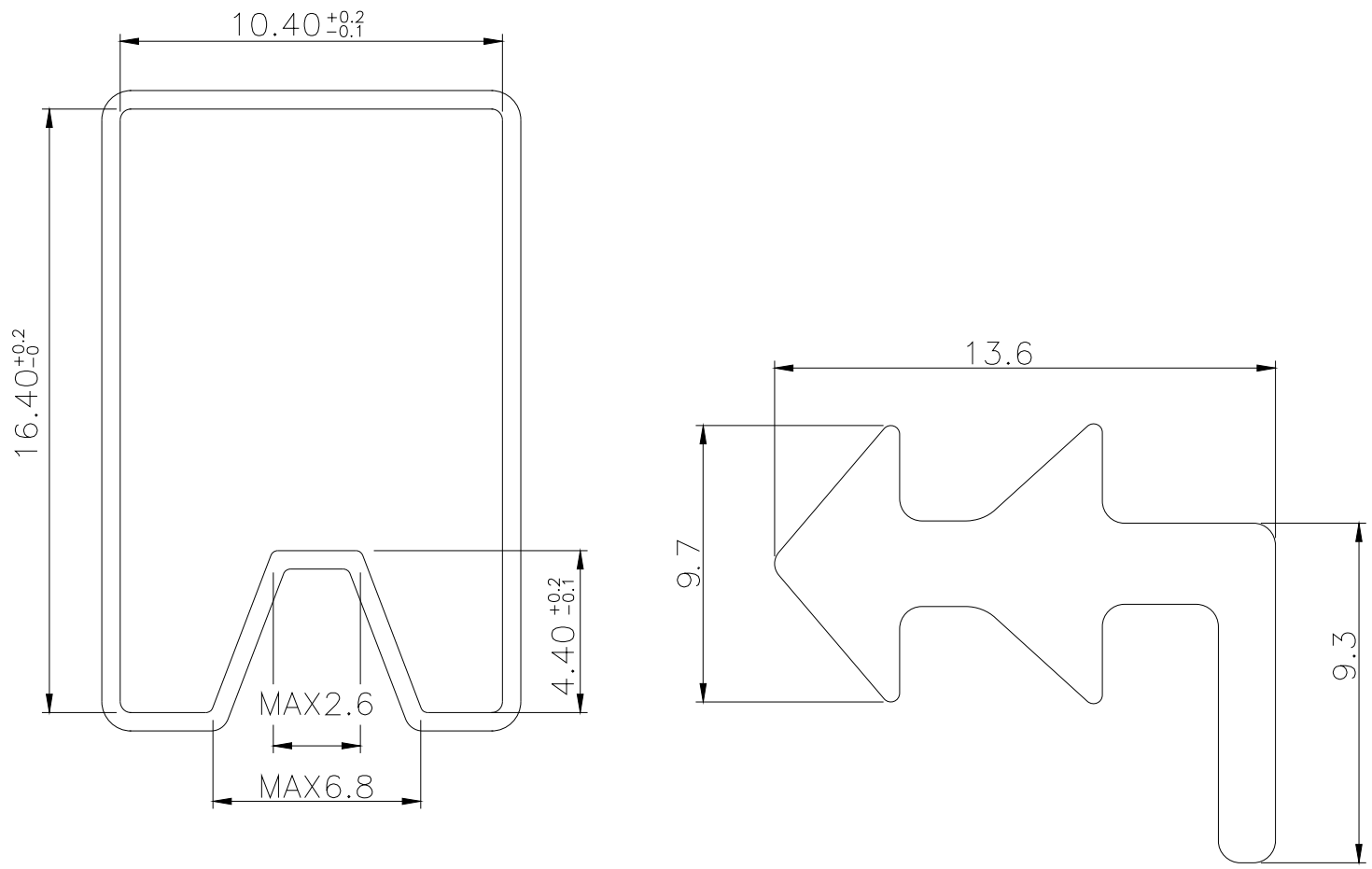
## RH TUBE



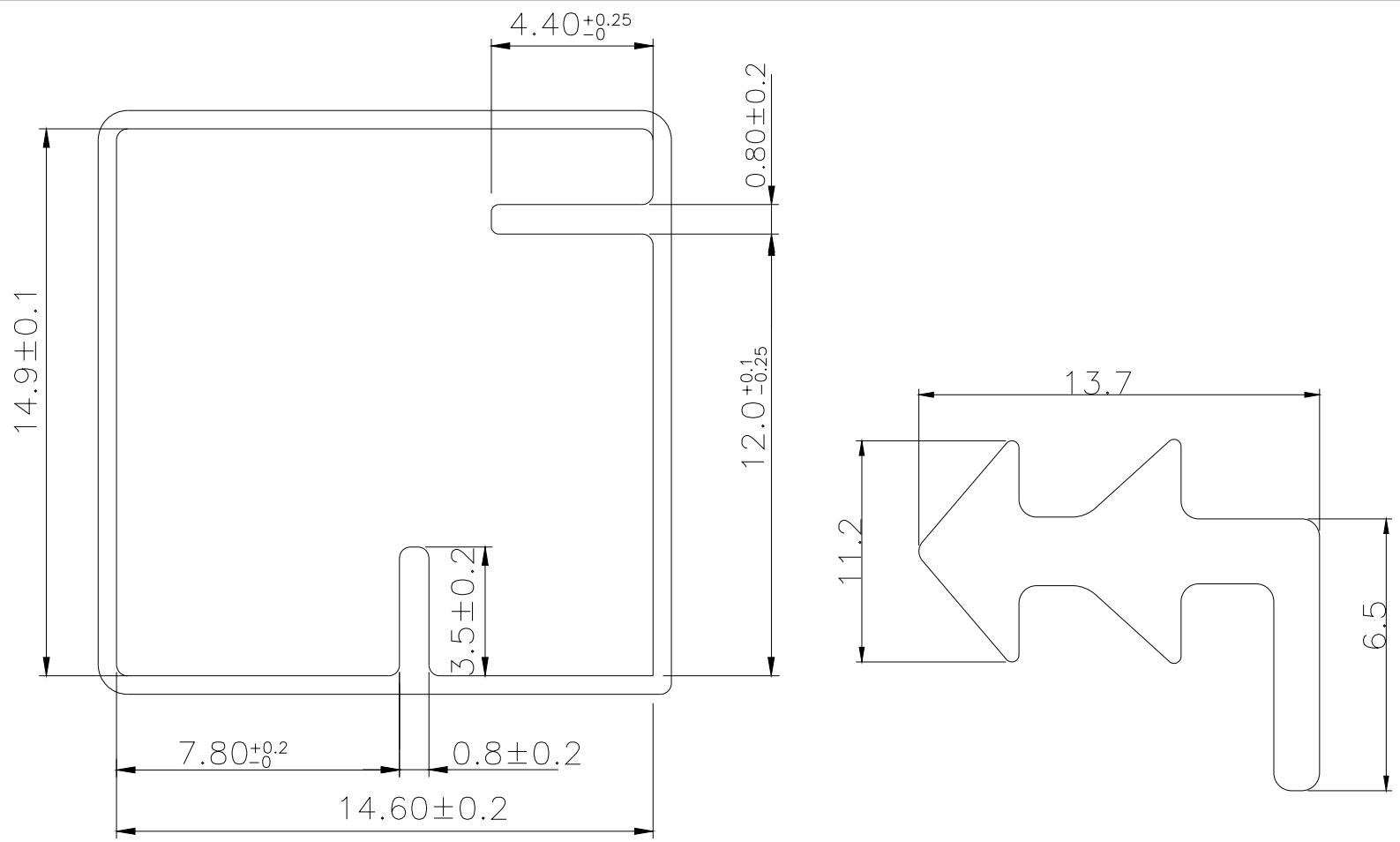
## RV TUBE



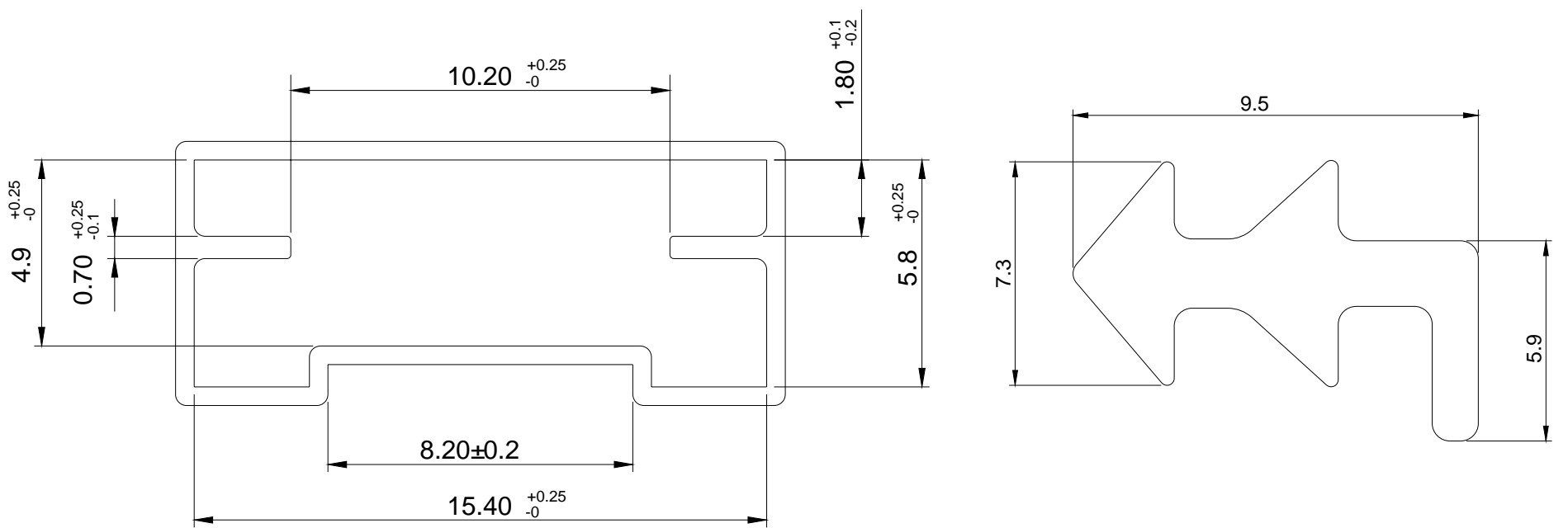
RH-H TUBE



RV -H TUBE



RM



RM-H

