

Photointerrupters(Reflective)

SG - 113

The SG - 113 reflective sensor for paper sensing combine high - output GaAs IRED with high sensitivity phototransistor. It is most applicable to paper sensor.

FEATURES

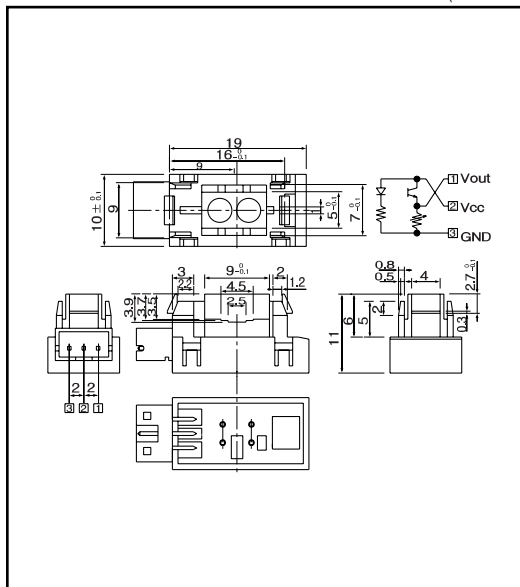
- Long focal distance type
- Adopted the three pins connector

APPLICATIONS

- Copiers
- Printers
- Facsimiles

DIMENSIONS

(Unit : mm)



MAXIMUM RATINGS

(Ta=25)

Item	Symbol	Rating	Unit
Supply voltage	V _{cc}	7	V
Output consumption	I _o	1	mA
Operating temp.	Topr.	- 10 +70	
Storage temp.	Tstg.	- 20 +80	

ELECTRO-OPTICAL CHARACTERISTICS

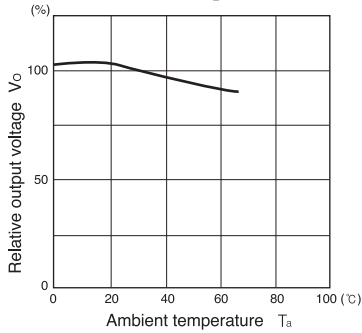
(Ta=25)

Item	Symbol	Conditions	Min.	Typ.	Max.	Unit.
Supply voltage	V _{cc}		4.5	5.0	5.5	V
High level output voltage	V _{OH}	d=5mm	2.1	3.0	3.9	V
Low level output voltage	V _{OL}	d=5mm		0.6	0.8	V
Frequency	f				170	Hz
Current consumption	I _{cc}	d=5mm		1.8	35	mA

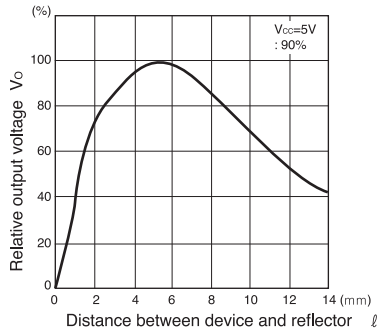
Photo interrupters(Reflective)

SG - 113

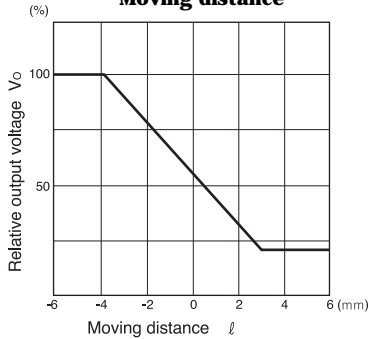
Relative output voltage Vs. Ambient temperature



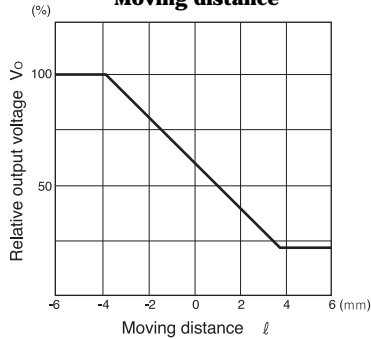
Relative output voltage Vs. Distance between device and reflector



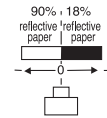
Relative output voltage Vs. Moving distance



Relative output voltage Vs. Moving distance



Method of measuring position detect characteristic (X)



Method of measuring position detect characteristic (Y)

