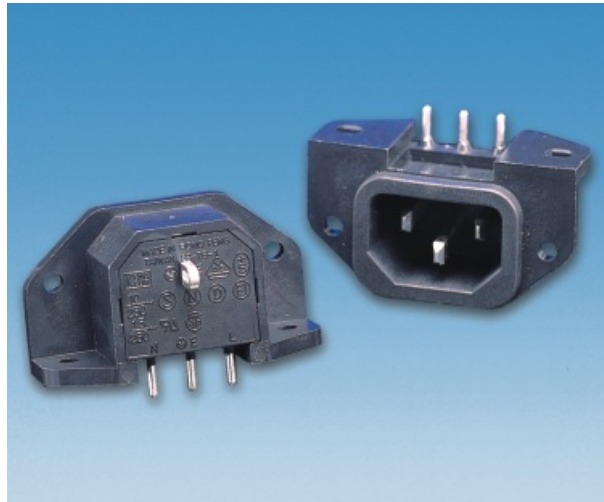


# AC SOCKET



## SS-7B-1-A

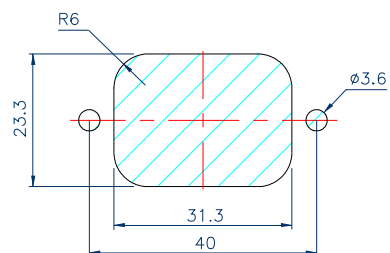
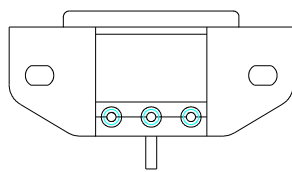
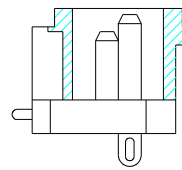
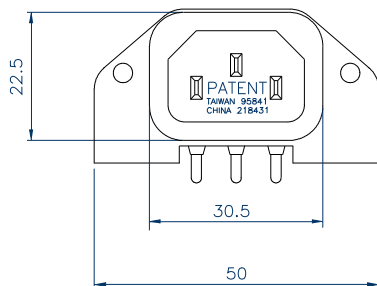
STANDARD :IEC 320 C14

RATING :15A250V AC

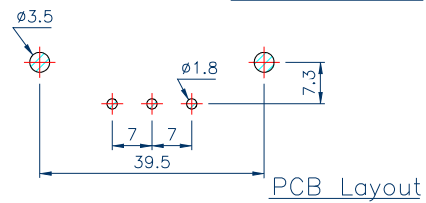
APPROVALS :UL/CSA

RATING :10A 250V~

APPROVALS :VDE/DEMKO/NAMKO/ SEV/  
SEMKO/FIMKO/KEMA/ CCEE



Panel Cut-Out



PCB Layout