

AC SOCKET



SS-7B-1-T7

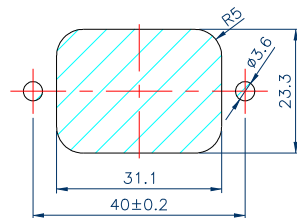
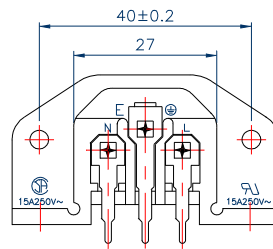
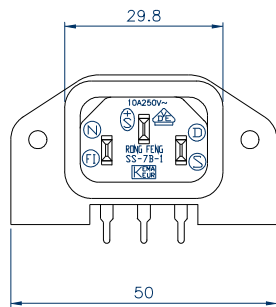
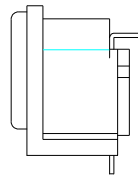
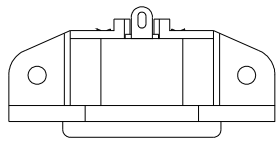
STANDARD : IEC 320 C14

RATING : 15A250V AC

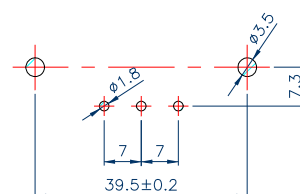
APPROVALS : UL/CSA

RATING : 10A 250V~

APPROVALS : VDE/DEMKO/NAMKO/ SEV/
SEMKO/FIMKO/KEMA/ CCEE



PANEL CUT-OUT



PCB LAYOUT