

AC SOCKET



SS-7B-PCB

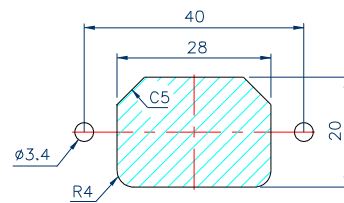
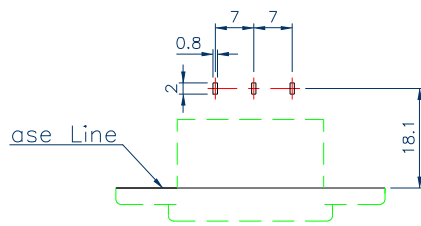
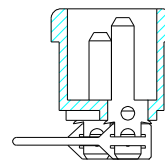
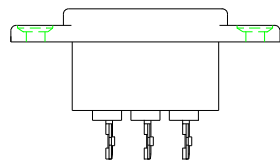
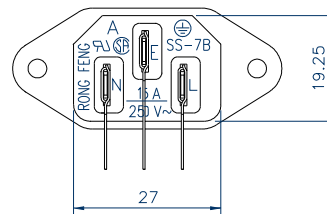
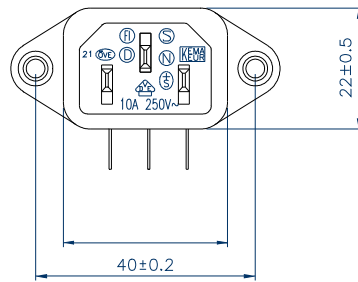
STANDARD : IEC 320 C14

RATING : 15A 250V AC

APPROVALS : UL/CSA

RATING : 10A 250V AC

APPROVALS : VDE/DEMKO/NAMKO/SEV/
SEMKO/FIMKO/KEMA/CCEE



PCB Layout

Mounting inlet flange in front of cover.