

# AC SOCKET



## SS-7B-VDE

STANNDAAARD: IEC 320 C14

RATING : 15A 250V AC

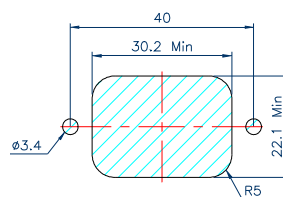
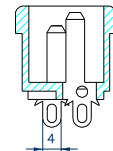
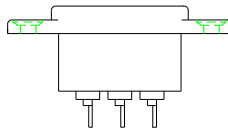
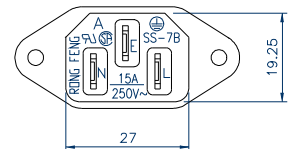
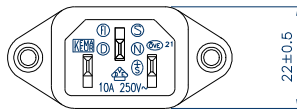
APPROVALS : UL/CSA

RATING : 10A 250V AC

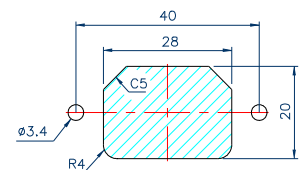
APPROVALS : VDE/DEMKO/NAMKO/

SEV/SEMKO/FIMKO/KEMA/CCEE

	X	MODE
SS-7B-VDE-	4.8	
	4.0	



Mounting inlet flange at back of cover.



Mounting inlet flange in front of cover.