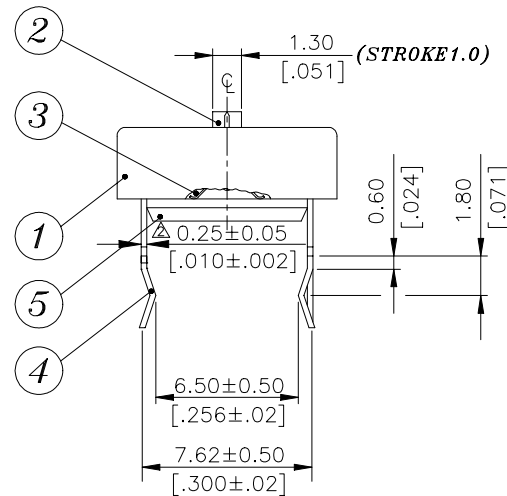
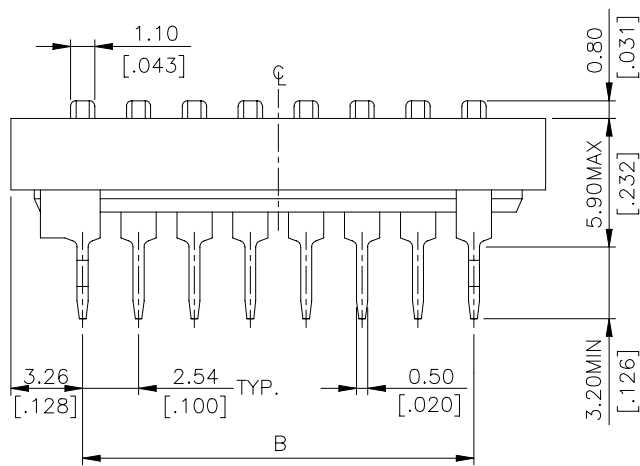
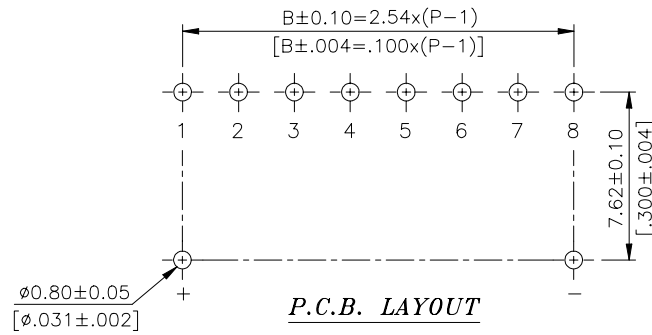
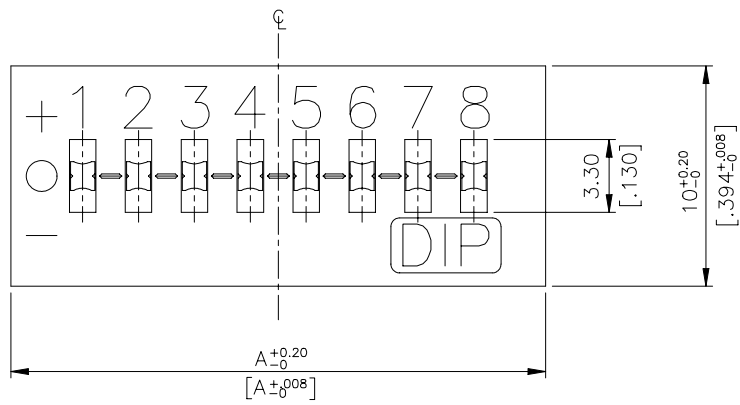


TDS SERIES

DIMENSIONS

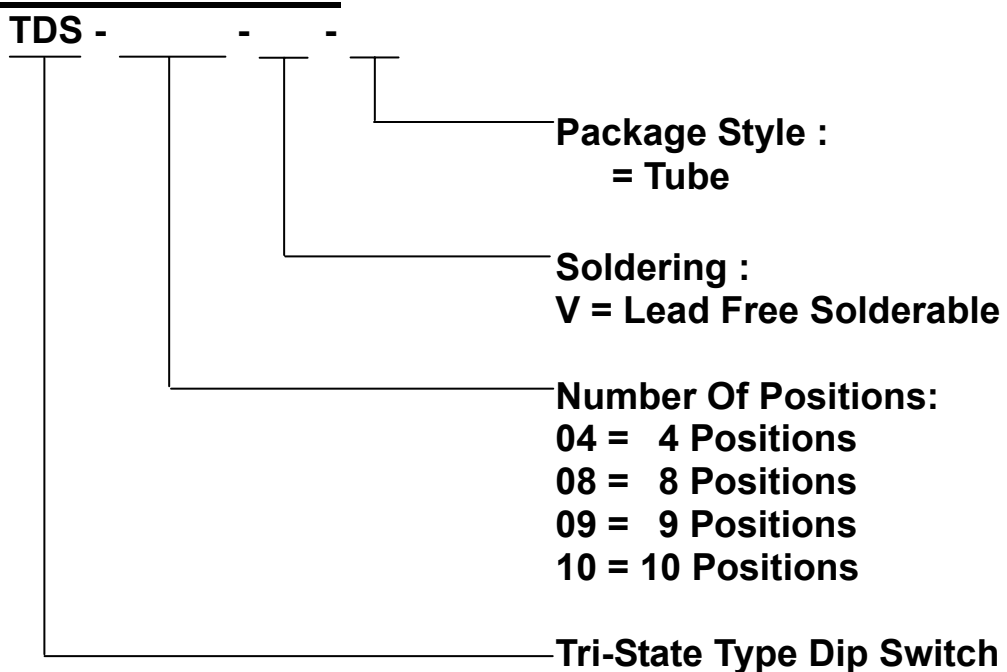
TDS



TDS-12	12	34.46[1.357]	27.94[1.100]
*TDS-10	10	29.38[1.157]	22.86[.900]
*TDS-09	9	26.84[1.057]	20.32[.800]
*TDS-08	8	24.30[.957]	17.78[.700]
TDS-07	7	21.76[.857]	15.24[.600]
TDS-06	6	19.22[.757]	12.70[.500]
TDS-05	5	16.68[.657]	10.16[.400]
*TDS-04	4	14.14[.557]	7.62[.300]
TDS-03	3	11.60[.457]	5.08[.200]
TDS-02	2	9.06[.357]	2.54[.100]
PROD. NO.	NO. OF POS.	DIM. A	DIM. B

**General Tolerance : 0.2 mm

HOW TO ORDER



SPECIFICATION

MECHANICAL

Mechanical Life: 2,000 operations cycles
Operation Force: 1,000gf max.
Stroke: 1.0mm
Operation Temp: -20 to +70
Storage Temp: -40 to +85

ELECTRICAL

Electrical Life: 2,000 cycles
Non-Switching Rating: 100mA, 50VDC
Switching Rating: 25mA, 24VDC
Contact Resistance: (a) 50mΩ max. at initial
(b) 100mΩ max. after life test
Insulation Resistance: 100MΩ min. at 500VDC
Dielectric Strength: 500VAC/1 minute
Circuit: 3 switching positions

MATERIALS

BASE & COVER: UL94V-0 PBT High Thermoplastic
Color: Black
ACTUATORS: UL94V-0 Nylon Thermoplastic
Color: White
CONTACT: Alloy Copper with gold plated
TERMINAL: Brass with tin plated
CONTACT PLATING: Gold plating over nickel

SOLDERING PROCESS

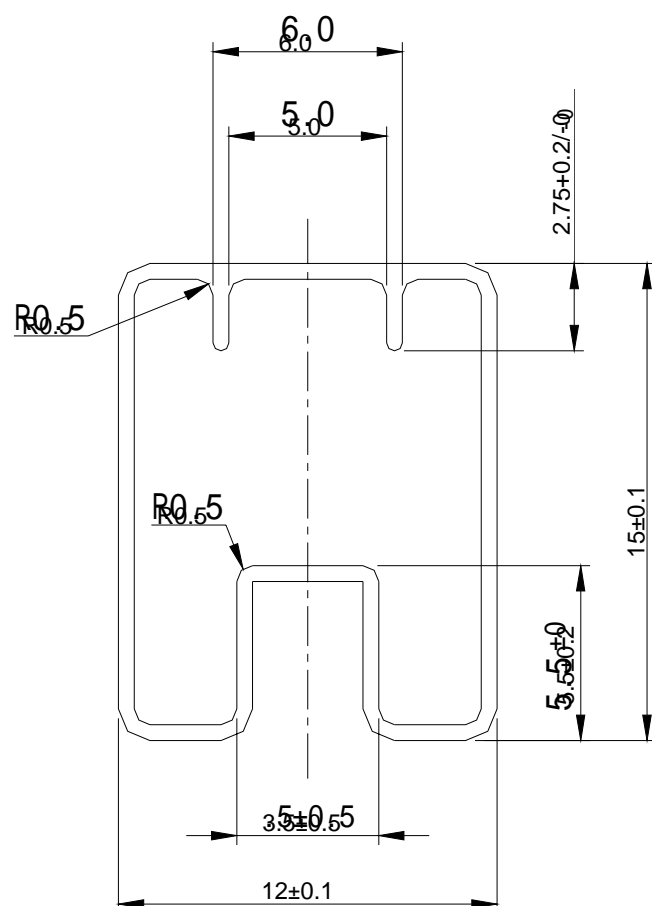
Keep all switch contacts in their "O" position for all operations.

WAVE SOLDERING: Recommended solder temperature at 500 (260) max. 5seconds.

HAND SOLDERING: Use a soldering iron of 30 watts, controlled at 350 approximately 5 seconds while Applying solder.

PACKING

PART NUMBER	NO.POS	QUANTITY PER TUBE
TDS-04	04	33
TDS-08	08	19
TDS-09	09	17
TDS-10	10	16



**General Tolerance : 0.1 mm