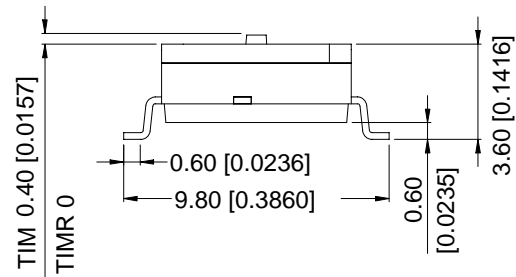
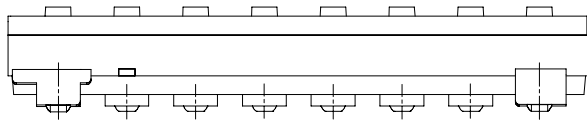
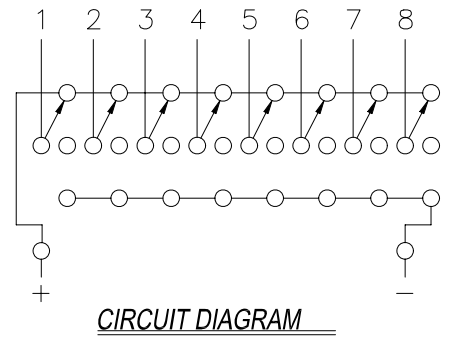
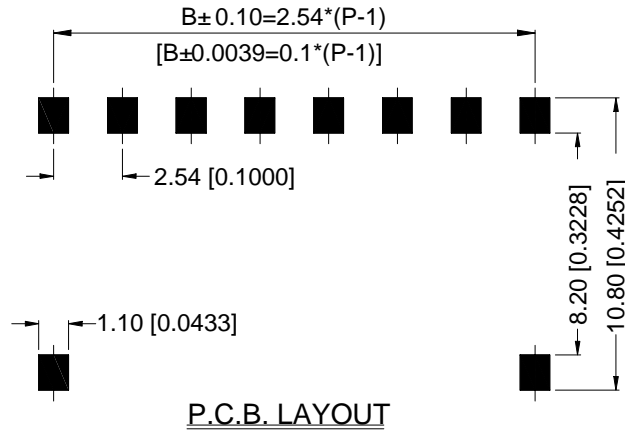
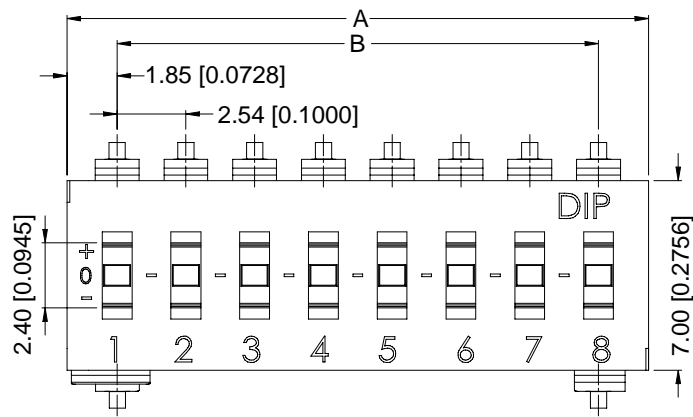


# TII(R) & TIM(R) SERIES

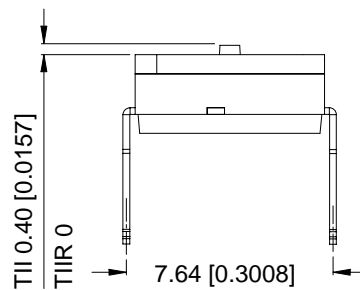
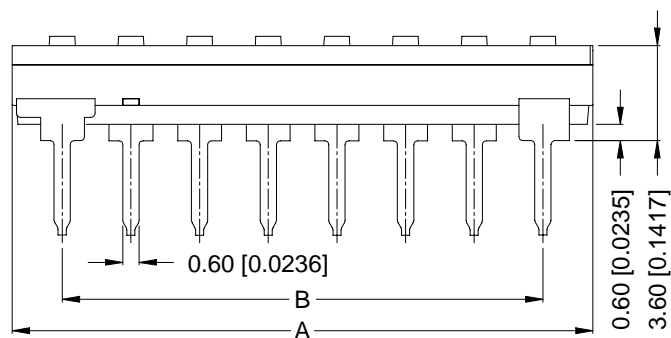
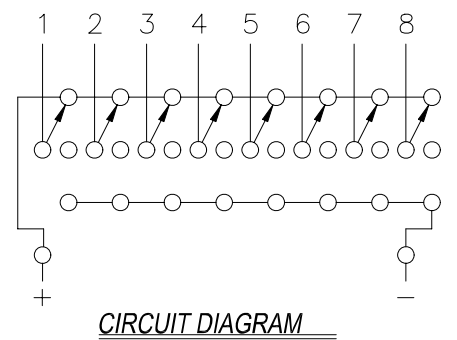
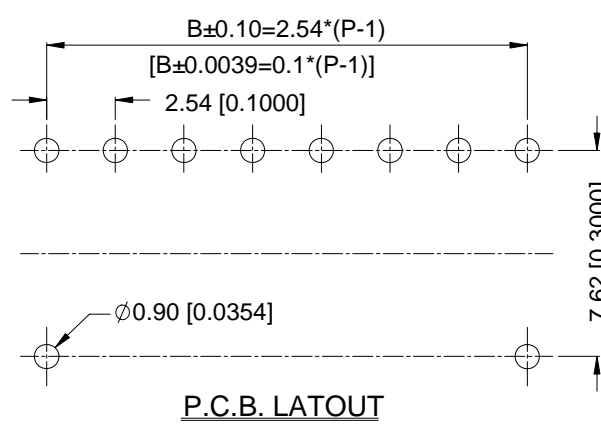
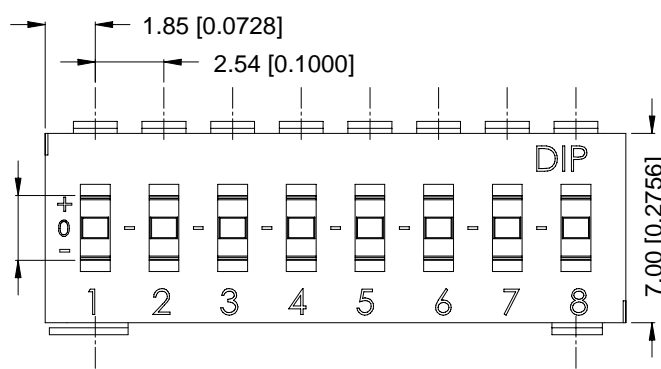
## DIMENSIONS

### TIM(R)



TIM-09	9	24.02[0.946]	20.32[.800]
TIMR-09	9	24.02[0.946]	20.32[.800]
TIM-08	8	21.48[.846]	17.78[.700]
TIMR-08	8	21.48[.846]	17.78[.700]
PROD. NO.	NO. OF POS.	DIM. A	DIM. B

### TII(R)



TII-09	9	24.02[0.946]	20.32[.800]
TIIR-09	9	24.02[0.946]	20.32[.800]
TII-08	8	21.48[.846]	17.78[.700]
TIIR-08	8	21.48[.846]	17.78[.700]
PROD. NO.	NO. OF POS.	DIM. A	DIM. B

## HOW TO ORDER

TI □ □ - □ □ - □ - V - □

Package Style

□ = Tube

T/R= Tape & Reel

Soldering :

V =Lead Free Solderable

Seal :

□ = Regular

T = Top Tape Sealed

(For recessed actuator only)

Number Of Positions :

04,06,08,09,10 Positions.

( 08,09 Poles Available Now )

Actuator Type :

□ = Raised Actuator

R = Recessed Actuator

Terminal Type :

M = S.M.T Type

I = Through Hole Type

Tri-Sate IC Type

## SPECIFICATION

### △MECHANICAL

Mechanical Life: 2,000 operations.

Operation Force: 1,000gf max.

Stroke: 0.8 mm

Operation Temp: -20°C to +85°C

Storage Temperature: -40°C to +85°C

### △ELECTRICAL

Electrical Life: 2,000 cycles.

Rating: 25 mA,24 VDC.

Contact resistance: 100mΩ max.

Dielectric Strength: 500VAC/1 minute.

Circuit: 3 switching positions.

## SOLDERING AND CLEANING PROCESSES

For best results, please follow these recommendation :

△ Keep all switch contacts in their "OFF" position for all Operations

△ WAVE SOLDERING : Recommended solder temperature at 500°F(260°C) max. 5 seconds for through hole type.

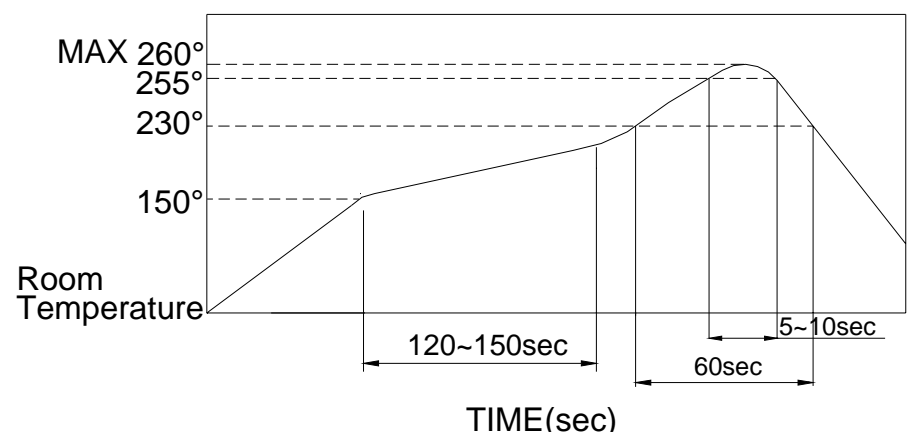
△ HAND SOLDERING : Use a soldering iron of 30 watts, controlled at 350°C approximately max 5 seconds while applying.

△ REFLOW SOLDERING : When applying reflow soldering, the peak temperature or the reflow oven should be set at 260°C max.

△ Do not wash the switch body except top tape sealed type, which suitable for spray cleaning method from top of the s/w.

△ Any flux enters the switch may fail the conductivity.

△ Reflow Temperature Profile :



## MATERIALS

△BASE & COVER: UL94V-0 Nylon High-Temp Thermoplastic. Color: Black.

△ACTUATOR: UL94V-0 LCP High-Temp Thermoplastic. Color: White.

△CONTACT: Alloy Copper with gold plated.

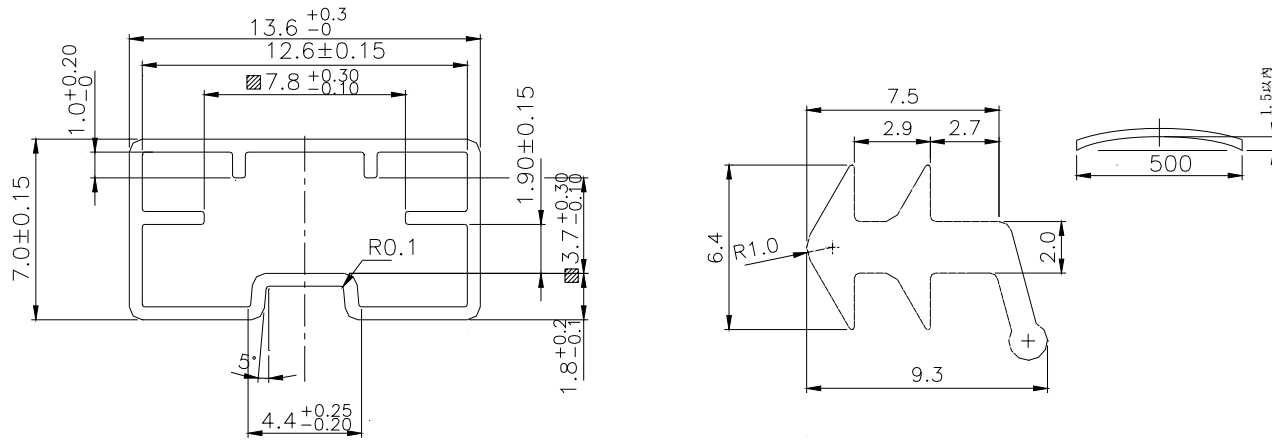
△TERMINAL: Brass with gold plated.

△TAPE: KAPTON.

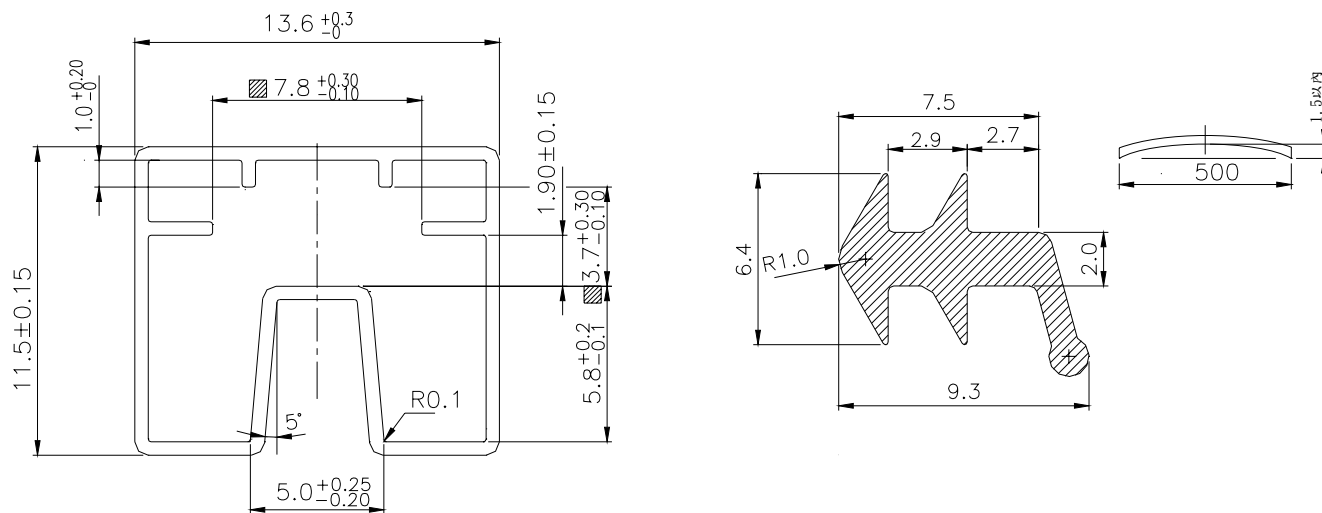
# PACKING

PART NUMBER	Number Per Tube	Number Per Reel
TII(R)-08	22	--
TIM(R)-08	22	900
TII(R)-09	20	--
TIM(R)-09	20	900

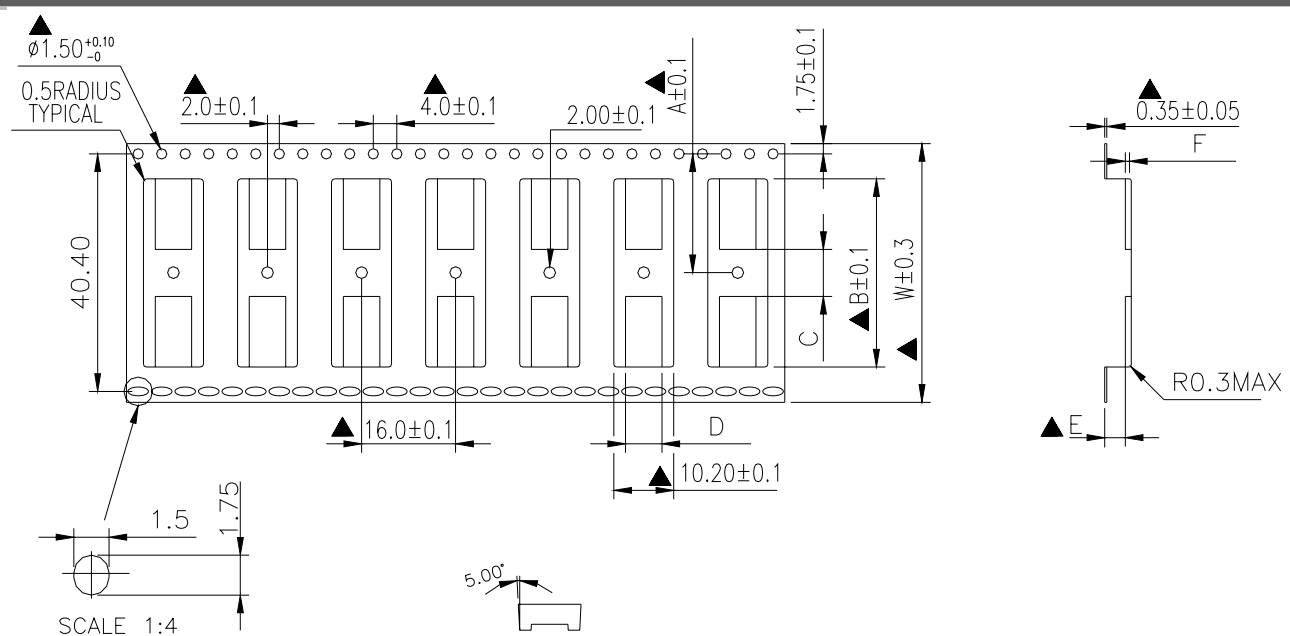
## TIM(R) TUBE



## TII(R) Tube



## TIM(R) Reel



TIM.DMR.EMR-09	620190000	44.00	20.20	24.26	5.00	6.00	4.5	0.4
TIM.DMR.EMR-08	620180000	32.00	14.20	21.70	6.00	6.00	3.5	0.9
PART NAME	PART NO.	W $\pm$ 0.3	A	B	C	D	E	F