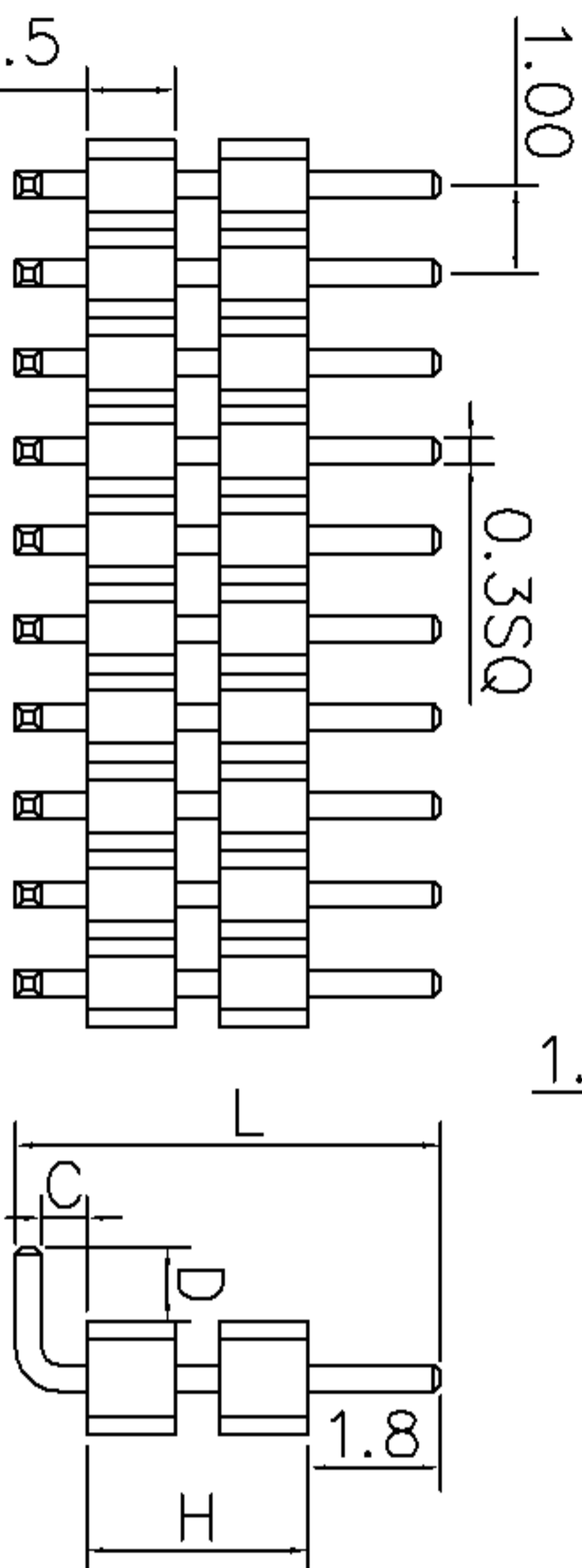
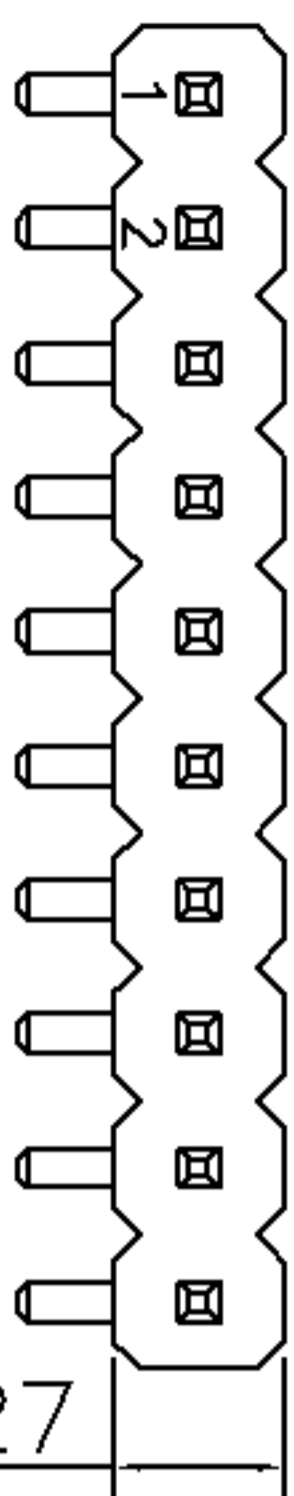


	A	新版图	/	2012.05.23	LZW
--	---	-----	---	------------	-----

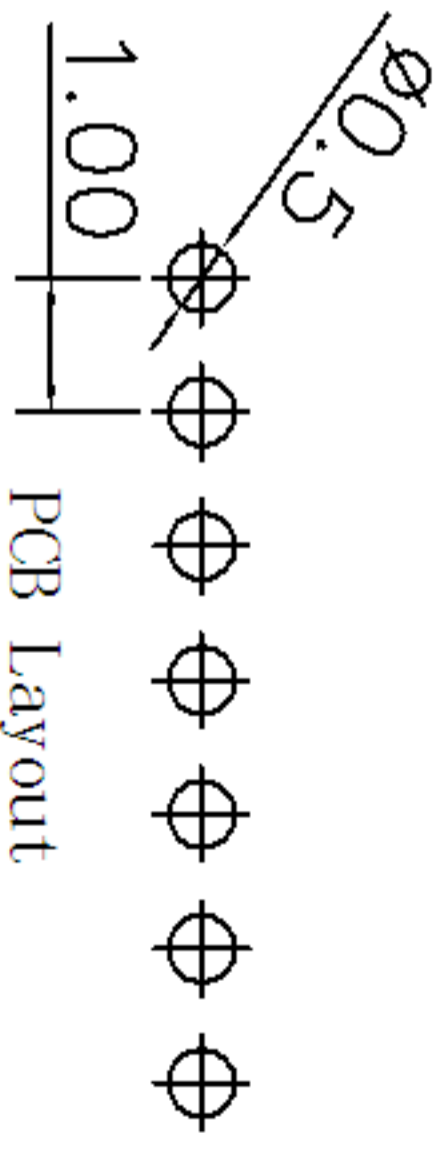


H、L、C、D的尺寸  
可依客户要求订做

Technical Data:

Material:  
Contact Material: Brass  
Insulator Material: PA6T+30%GF  
Electrical:  
Current rating: 0.75Amps/Contact max.  
Contact resistance:  $\leq 20$  mohms/Contact  
Insulation resistance:  $\geq 1000$  Mohms at V=100V  
Withstanding Voltage: 300V AC/Minute  
Mechanical:  
Operating Temperature: -55° C~105° C  
Tin plated : -40° C~105° C  
Soldering Temperature: 260° C 10s Max.

1101-400R21XX-H-L  
└─1.00PIN距双塑胶单  
排弯式排针系列  
└─塑高  
└─总高  
└─每排PIN数



TOLERANCE		ANGLE
TOL ON		
.XXX=	0.05	
.XX+	0.15	1°
X⊥	0.20	2°
X.+	0.30	

DRAWN	DATE	 武汉宇恒电子有限公司 WUHAN YUEHENG ELECTRONIC CO., LT
LZW	2012.05.23	
CHECKED	DATE	TITLE:
CLIENT APPROVE	DATE	排针系列-1.00 PIN距-单排-双塑
RFQ NO		
CLIENT P/N		
UNIT: mm	SCALE: free	
FILE NO.:	YH20120601A009	