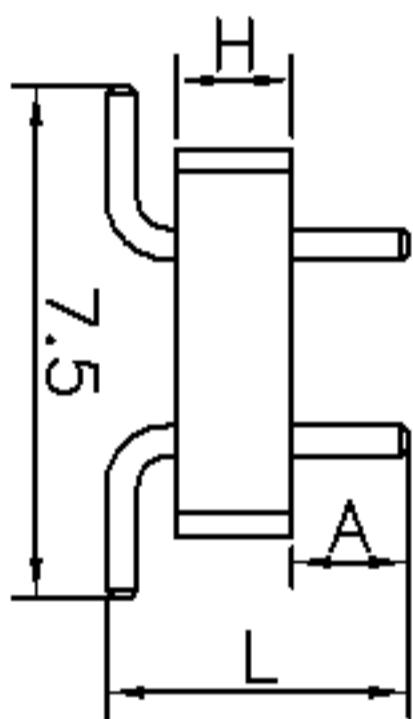
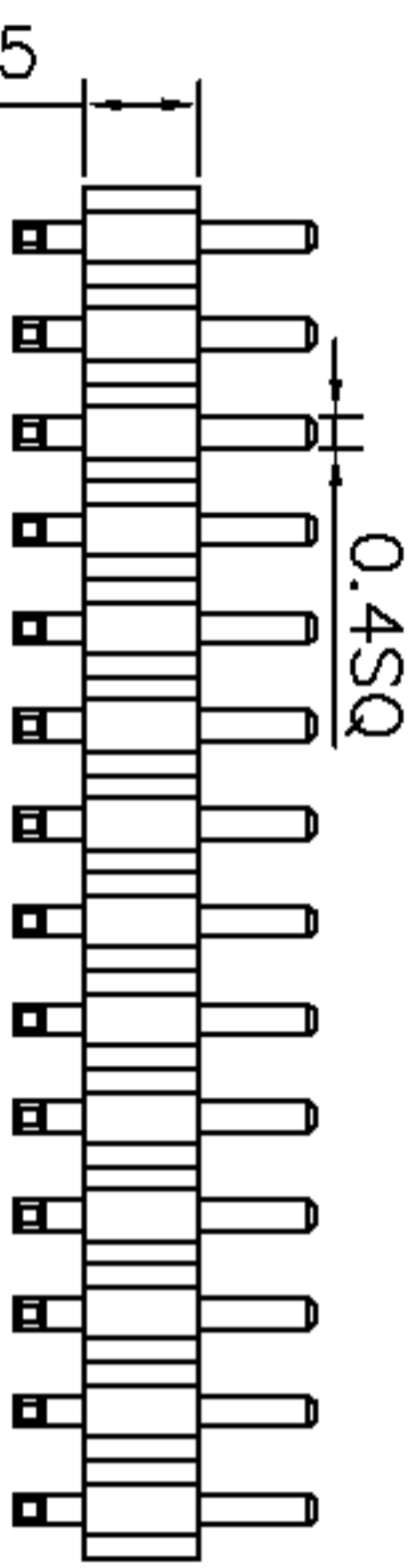
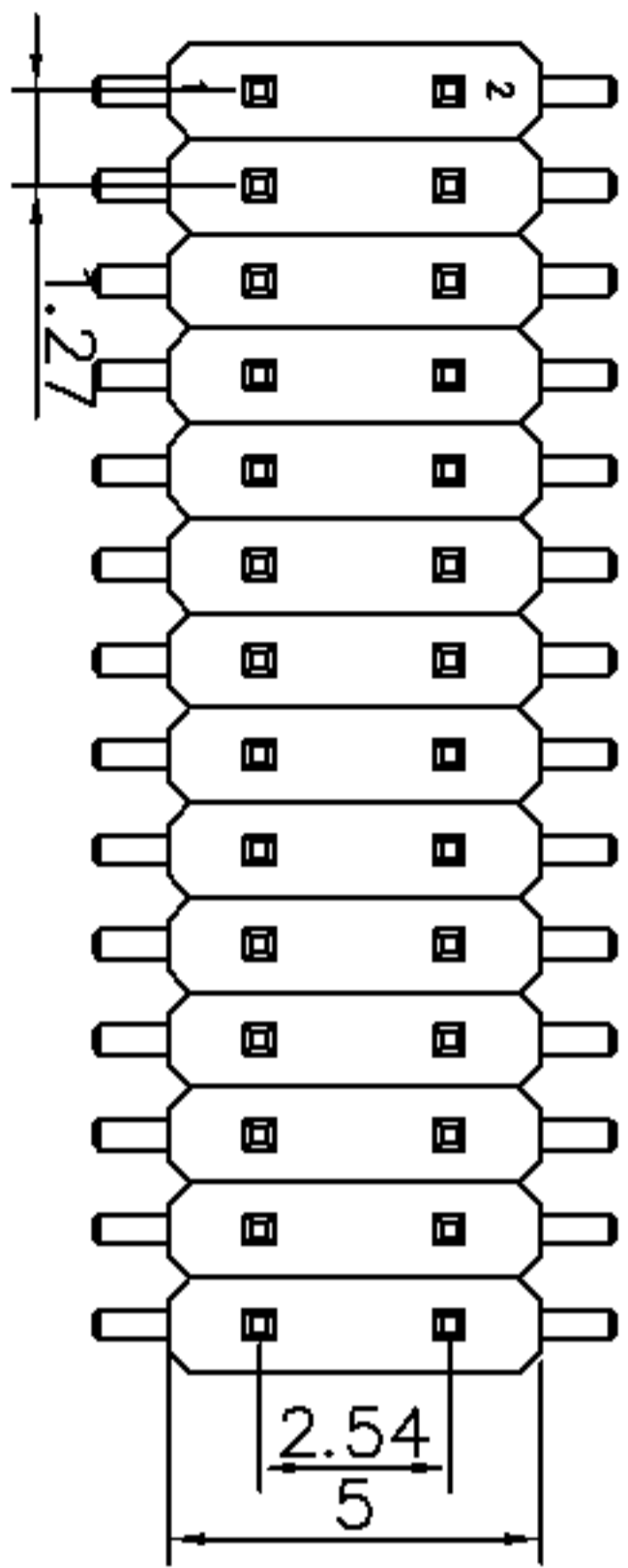
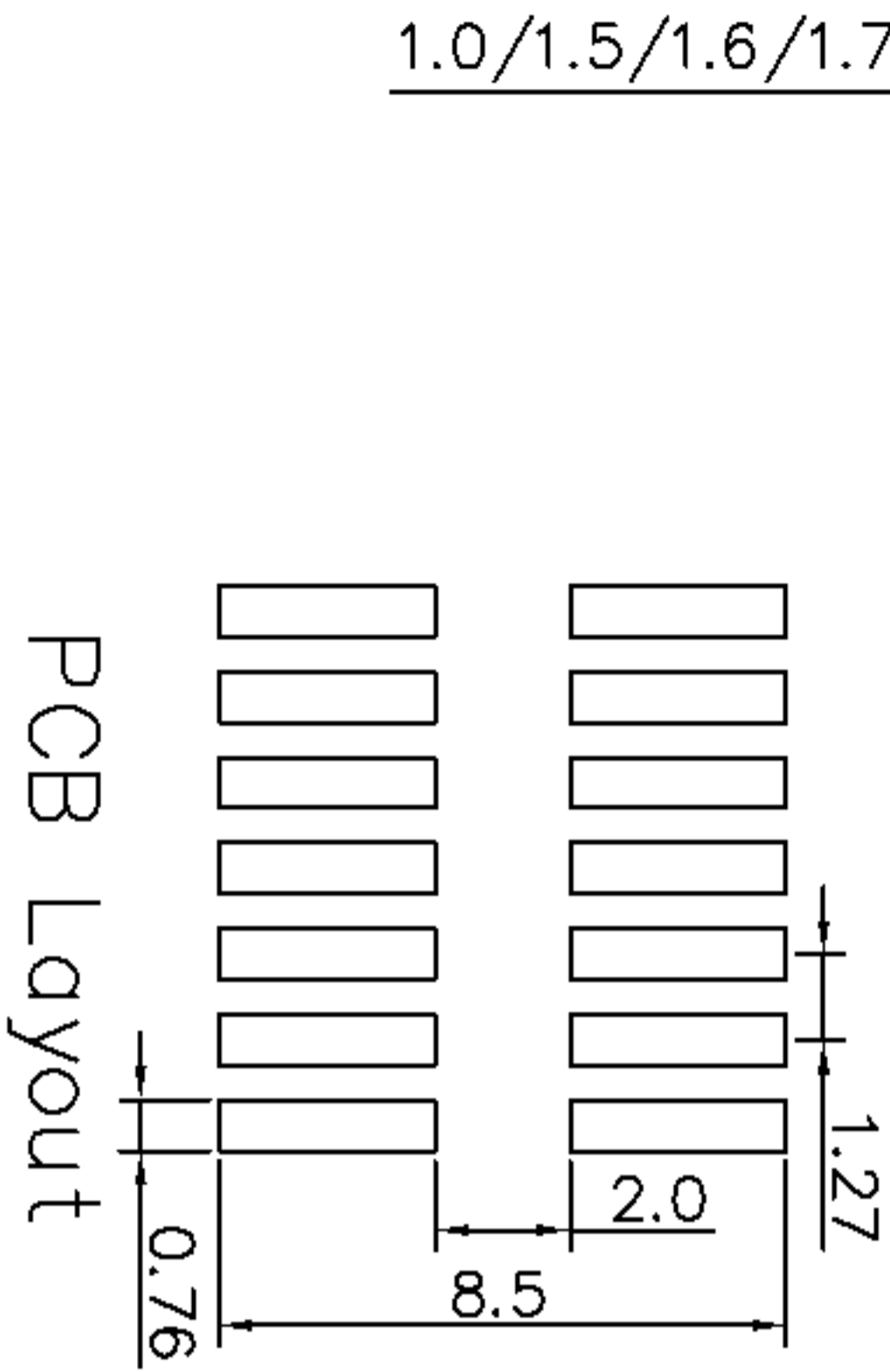


A	新版图	/	LZW

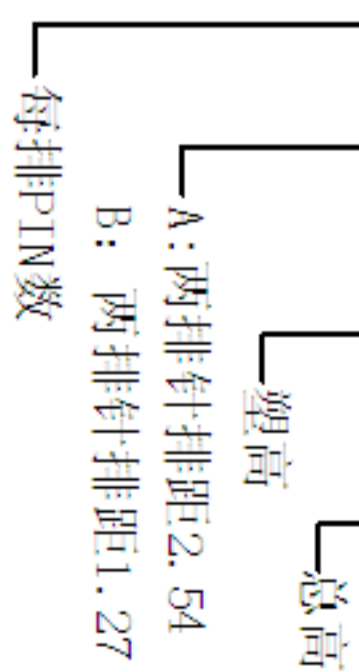


A、H、L的尺寸
可依客户要求订做



1101-127M12XXXA-H-L

1.27PIN距单塑胶双
排直式排针系列



Specification:

Current Rating: 1 Ampere
Insulation Resistance : 1000M ohms Min.
Dielectric Withstanding : 300V AC
Contact Resistance: 20m ohms Max.
Operating temperature: -40° C to +105° C
Material:
Contact: Brass, Gold Flash or per Require
Housing: Nylon6T UL 94V-0

DRAWN		DATE		武汉宇恒电子有限公司 WUHAN YUHENG ELECTRONIC CO., LTD	
LZW		2011. 09. 07			
CHECKED		DATE		TITLE:	
				排针系列-1.27*2.54PIN距-双排 单塑胶-SMT贴片式	
CLIENT APPROVED		DATE		REQ NO	
				CLIENT P/N	
				UNIT: mm	
				SCALE: free	
				FILE NO.: YH20120525A010	

PCB Layout