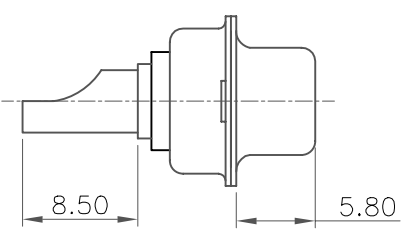
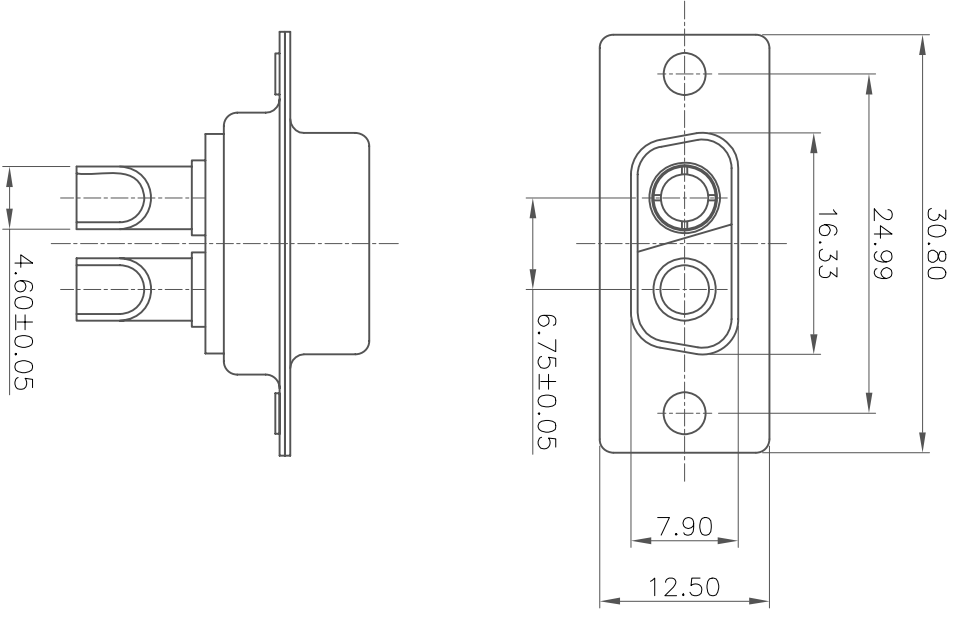


REV	MODIFICATION	DATE	DRAW	APPROVE
A	NEW DWG	2007.07.10	HUANG	KEVIN

NOTES
1:MATERIAL:
SHELL: STEEL
HOUSING: PBT+30%G.F, BLACK, UL94V-0
CONTACT: PHOSPHOR BRONZE
2:FINISH:
SHELL: NICKEL PLATING
CONTACT PLATING: GOLD PLATING
3:SPECIFICATION:
CURRENT RATING: 40A
VOLTAGE RATING: 300V
CONTACT RESISTANCE: 10mΩ
WITHSTANDING VOLTAGE: 1000V
INSULATION RESISTANCE: 5000MΩ
OPERATING TEMPERATURE: -55°C~105°C



-TOLERANCES-		UNLESS OTHERWISE SPECIFIED	
X.X	±0.30	X.X°	±3°
X.XX	±0.15	X.XX°	±1°
X.XXX	±0.10	X.XXX°	±0.5°

		TITLE:	2V2 FEMALE SOLDE成品(一公一母)
--	--	--------	--------------------------

APPD:	KEVIN	PRODUCT NO:	131-002FPXMK06
CHECK:	TENA	DATE:	2007.07.10
DRAW:	HUANG	SCALE:	MM
		UNIT:	MM
		TYPE:	Y
		PAGE:	1/1