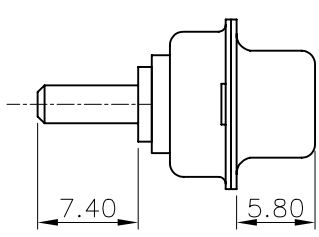
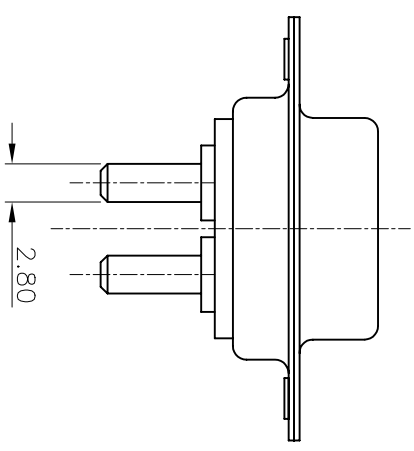
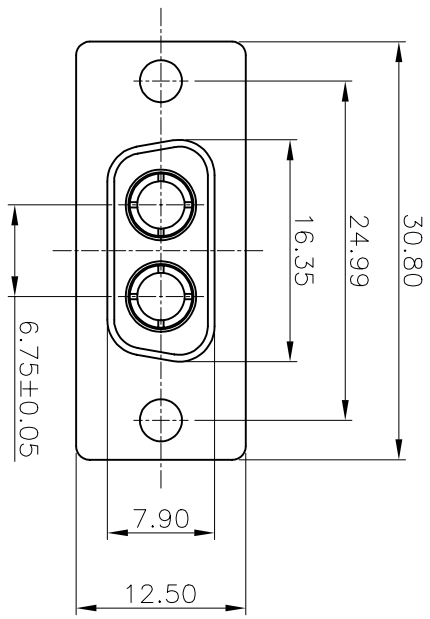


REV	MODIFICATION	DATE	DRAW	APPROVE
A	NEW DWG	2007.07.10	HUANG	KEVIN

NOTES

- 1: MATERIAL:
SHELL: STEEL
HOUSING: PBT+30%G.F, BLACK, UL94V-0
CONTACT: PHOSPHOR BRONZE
- 2: FINISH:
SHELL: NICKEL PLATING
CONTACT PLATING: GOLD PLATING
- 3: SPECIFICATION:
CURRENT RATING: 40A
VOLTAGE RATING: 300V
CONTACT RESISTANCE: 10mΩ
WITHSTANDING VOLTAGE: 1000V
INSULATION RESISTANCE: 5000MΩ
OPERATING TEMPERATURE: -55°C~105°C



-TOLERANCES-		UNLESS OTHERWISE SPECIFIED	
X.X	±0.30	X.X°	±3°
X.XX	±0.15	X.XX°	±1°
X.XXX	±0.10	X.XXX°	±0.5°

		TITLE: 2W2 FEMALE 插板成品
--	--	---------------------------

APPD:	KEVIN	PRODUCT NO:	133-002FPXMK01	
CHECK:	TENA	DATE	SCALE	UNIT
DRAW:	HUANG	2007.07.10	FRBE	MM
			Y	1/1

1 2 3 4 5 6 7 8 9 10

A B C D E F G