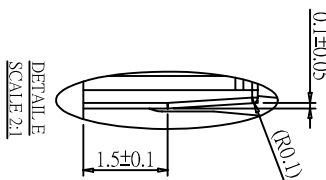
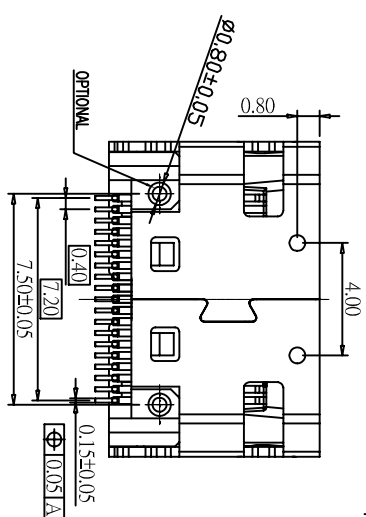
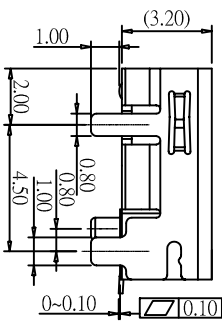
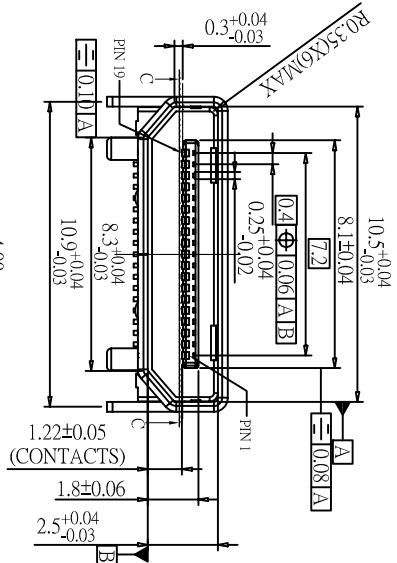
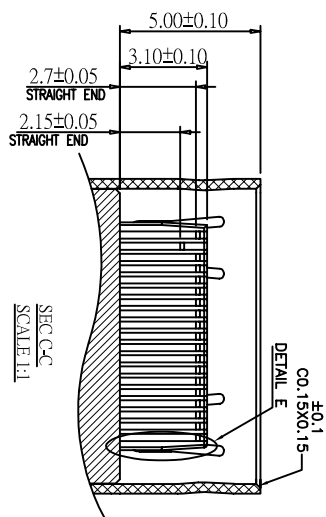
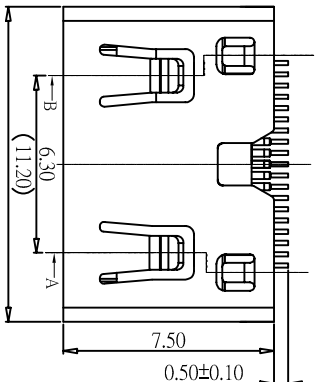
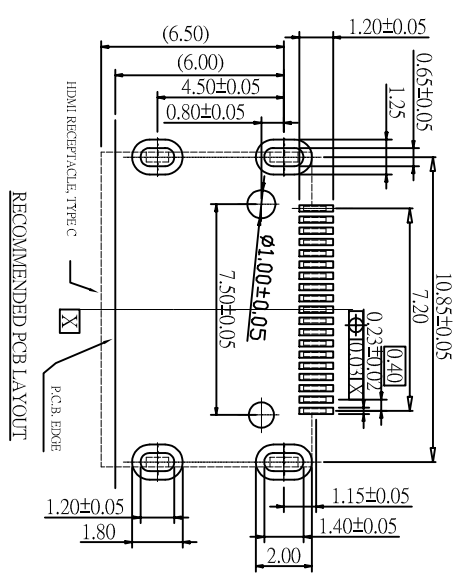


REV	DESCRIPTION	MODIFICATION	DATE
A/0	新制定		07.01.08



SPECIFICATIONS

OPERATING CURRENT: 0.5A MAX.
 OPERATION TEMPERATURE: -25°C TO +85°C
 DIELECTRIC WITHSTANDING VOLTAGE:
 500volts AC BETWEEN ADJACENT TERMINAL(UNMATE)
 300volts AC BETWEEN ADJACENT TERMINAL(MATE)
 INSULATION RESISTANCE:
 100Mohm MIN.(UNMATED);10Mohm MIN.(MATED)



未標示公差尺寸值		DRAWN BY		FAN SHA	
METRIC		CHECKED			
.0=±0.35		APPROVED			
.00=±0.25		DRAW NO		COSJ-655	
.000=±0.15		UNIT		mm	
TITLE:		HDMI RECEPTACLE TYPE C			
PRODUCT NO:		HF19R16-6131015			
FILE NO:		ZK-3-D-001			
SCALE		1:1 REV		A/0	