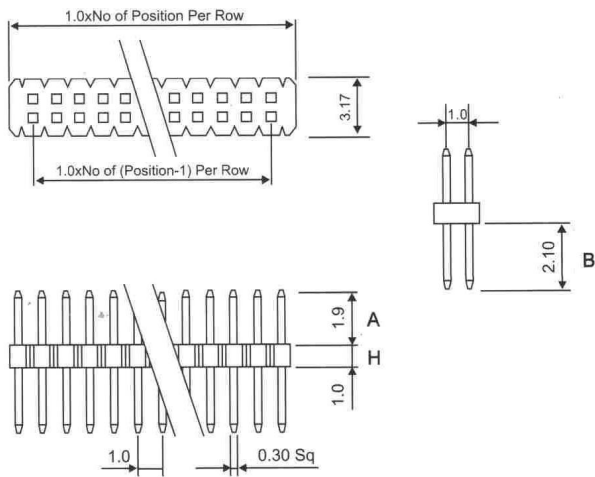
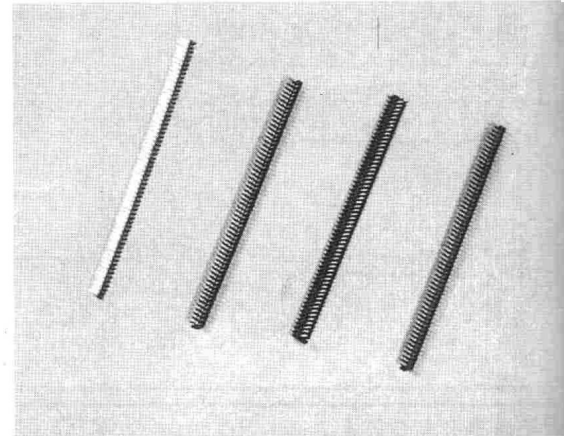


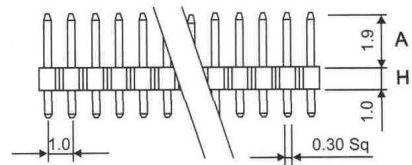
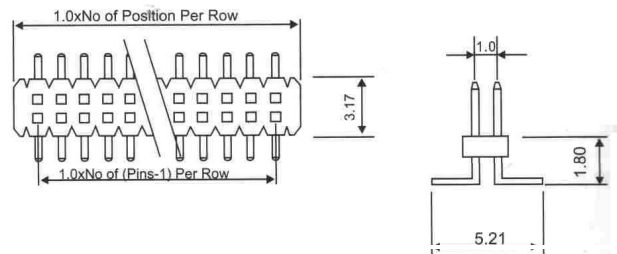
PIN HEADER STRIP(1.00mm) FEMALE PCB CONNECTOR(1.00mm)

201 - 1.0 Series
203 - 1.0 Series

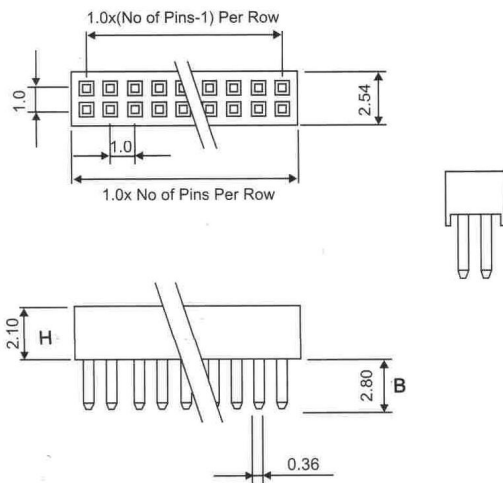
1.0x1.0mm center pin header
Single row 10 to 120 contacts



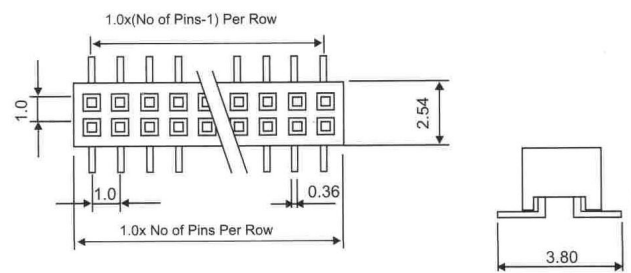
201S-1.0-2 x No. of Pins/2 A/H/B=1.9/1.0/2.10



201-SMT-1.0-2 x No. of Pins/2 A/H/C=1.9/1.0/0.8



203S-1.0-2 x No. of Pins/2 H=2.10mm



203-SMT-1.0-2 x No. of Pins/2 H=2.10mm

1.0x1.0mm Female header
Dual row board to board connector 10 to 120 contacts

Pitch: 1.00mm(0.039")

Pin Header Single Row Straight Dip Type

Technical Data

Material:

Contact Material: Brass

Insulator Material: Black Polyester UL94V-0

Standard: PA6T+30%G.F

Electrical:

Current rating: 0.75Amps/contact max.

Contact resistance: $\leq 20m\Omega$ /contact

Insulation resistance: $\geq 1000M\Omega$ at $V=100V$

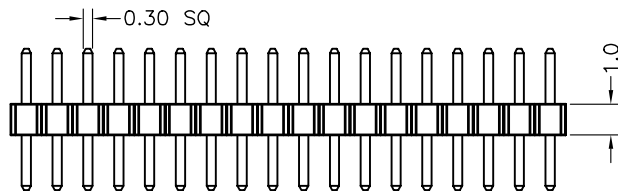
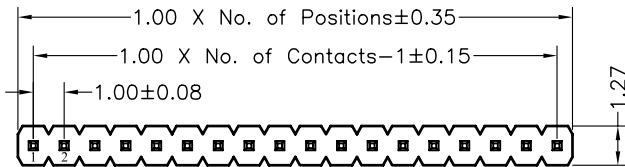
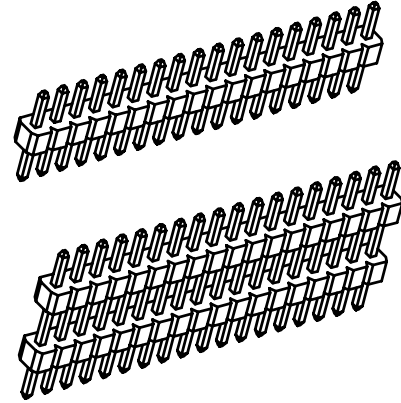
Withstanding Voltage: 300V AC/minute

Mechanical:

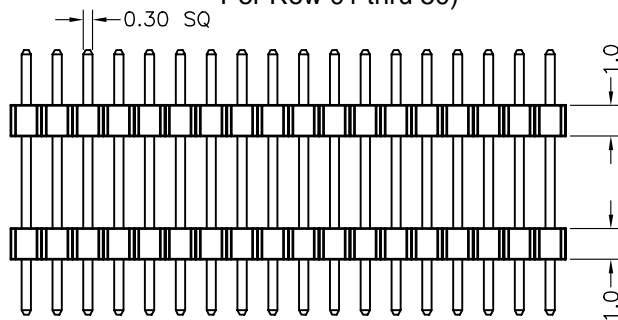
Operating temperatures: Gold Plated: $-55^{\circ}C$ to $+105^{\circ}C$

Tin plated: $-40^{\circ}C$ to $+105^{\circ}C$

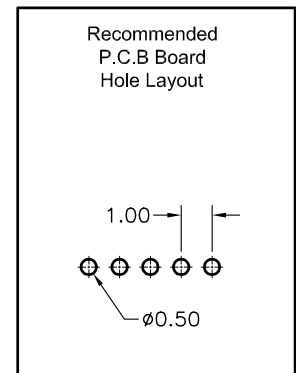
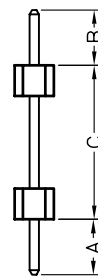
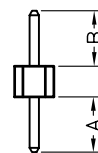
Soldering temperature: $+260^{\circ}C$, 10s max.



201-1.0-1*XXP (XX:NO. of Persition Per Row 01 thru 50)



201-1.0DL-1*XXP (XX:NO. of Persition Per Row 01 thru 50)



Pitch: 1.00*1.00mm(0.039*0.039")

Pin Header Dual Row Straight Dip Type

Technical Data

Material:

Contact Material: Brass

Insulator Material: Black Polyester UL94V-0

Standard: PA6T+30%G.F

Electrical:

Current rating: 0.75Amps/contact max.

Contact resistance: $\leq 20\text{m}\Omega/\text{contact}$

Insulation resistance: $\geq 1000\text{M}\Omega$ at $V=100\text{V}$

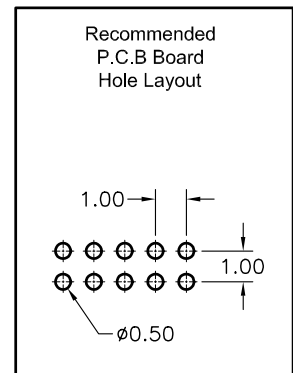
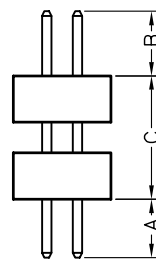
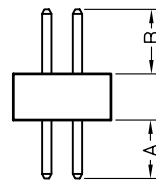
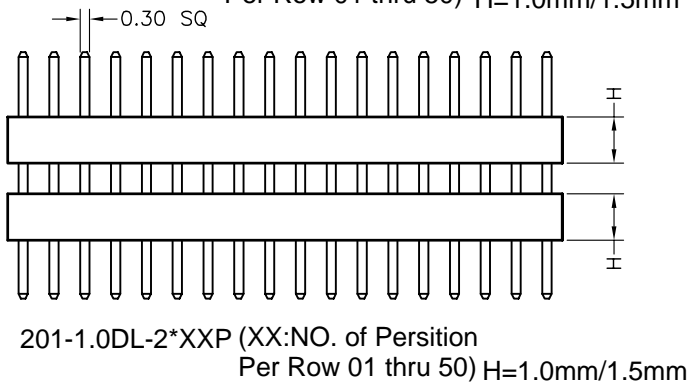
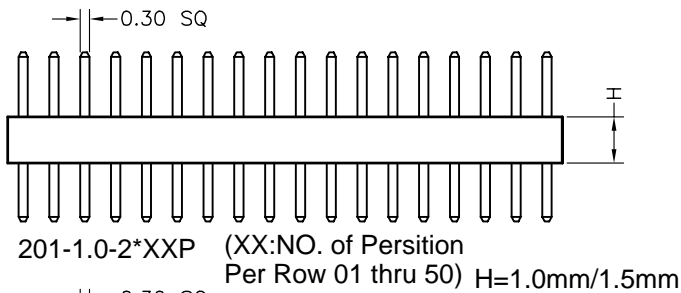
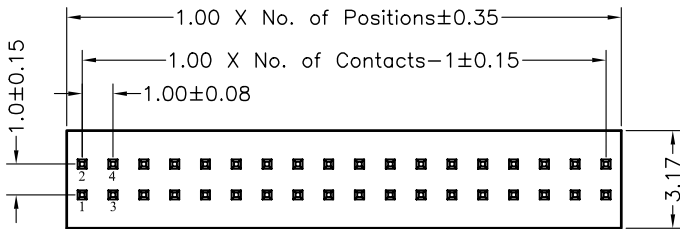
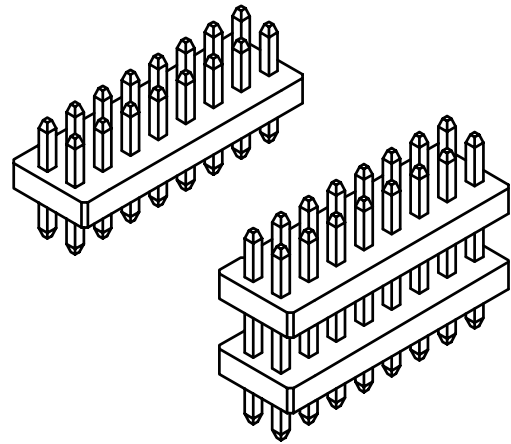
Withstanding Voltage: 300V AC/minute

Mechanical:

Operating temperatures: Gold Plated: -55°C to $+105^\circ\text{C}$

Tin plated: -40°C to $+105^\circ\text{C}$

Soldering temperature: $+260^\circ\text{C}$, 10s max.



Pitch: 1.00mm(0.039")

Pin Header Single Row Right Angle Dip Type

Technical Data

Material:

Contact Material: Brass

Insulator Material: Black Polyester UL94V-0

Standard: PA6T+30%G.F

Electrical:

Current rating: 0.75Amps/contact max.

Contact resistance: $\leq 20\text{m}\Omega/\text{contact}$

Insulation resistance: $\geq 1000\text{M}\Omega$ at $V=100\text{V}$

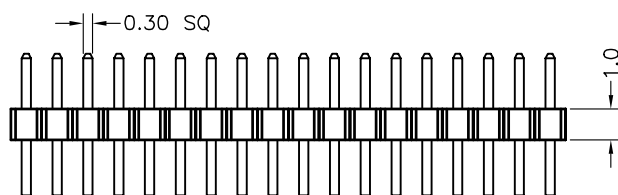
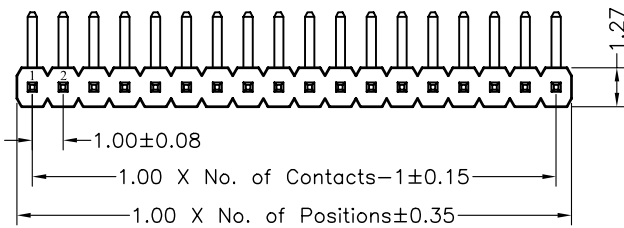
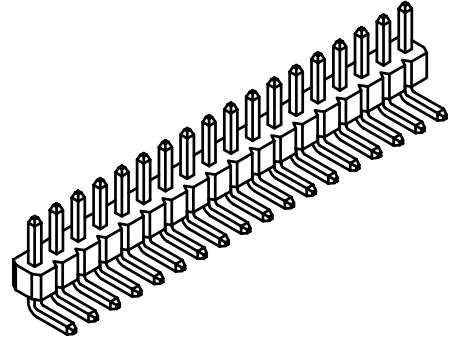
Withstanding Voltage: 300V AC/minute

Mechanical:

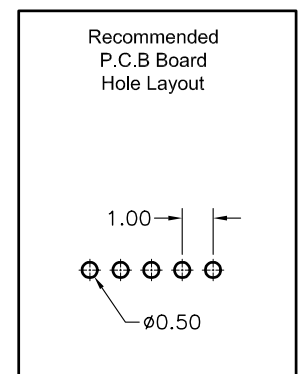
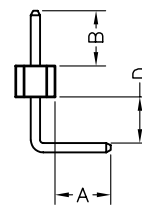
Operating temperatures: Gold Plated: -55°C to $+105^\circ\text{C}$

Tin plated: -40°C to $+105^\circ\text{C}$

Soldering temperature: $+260^\circ\text{C}$, 10s max.



201-1.0R-1*XXP (XX:NO. of Persition
Per Row 01 thru 50)



Pitch: 1.00*1.00mm(0.039*0.039")

Pin Header Dual Row Right Angle Dip Type

Technical Data

Material:

Contact Material: Brass

Insulator Material: Black Polyester UL94V-0

Standard: PA6T+30%G.F

Electrical:

Current rating: 0.75Amps/contact max.

Contact resistance: $\leq 20\text{m}\Omega/\text{contact}$

Insulation resistance: $\geq 1000\text{M}\Omega$ at $V=100\text{V}$

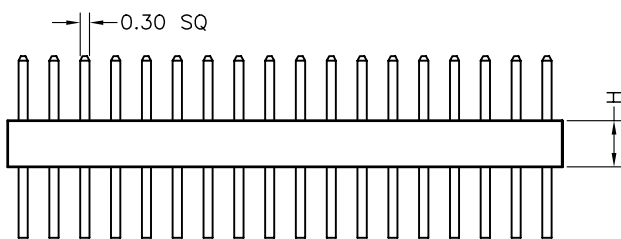
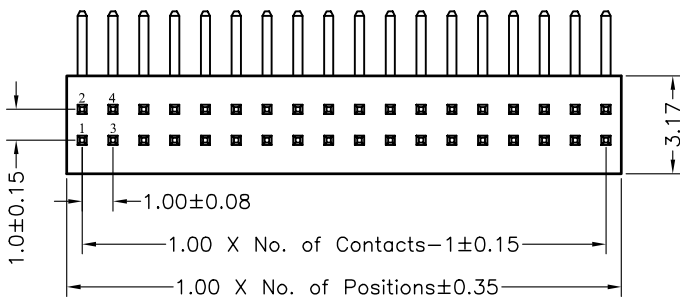
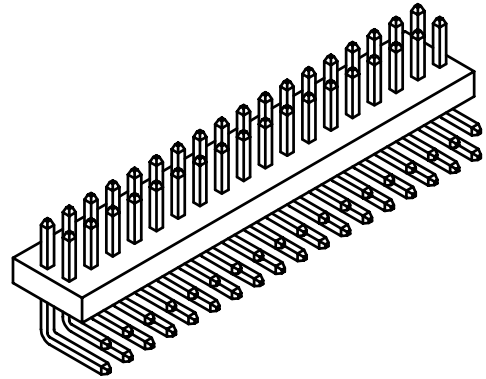
Withstanding Voltage: 300V AC/minute

Mechanical:

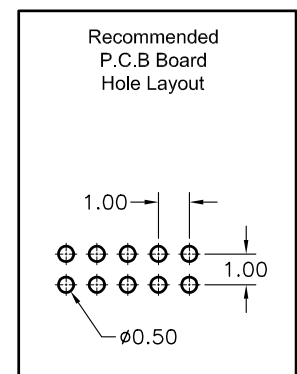
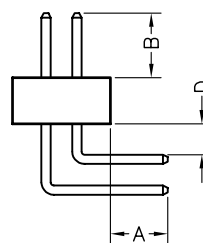
Operating temperatures: Gold Plated: -55°C to $+105^\circ\text{C}$

Tin plated: -40°C to $+105^\circ\text{C}$

Soldering temperature: $+260^\circ\text{C}$, 10s max.



201-1.0R-2*XXP (XX:NO. of Persition
Per Row 01 thru 50) H=1.0mm/1.5mm



Pitch: 1.00*1.00mm(0.039*0.039")

Pin Header Dual Row S.M.T Type

Technical Data

Material:

Contact Material: Brass

Insulator Material: Black Polyester UL94V-0

Standard: PA6T+30%G.F

Electrical:

Current rating: 0.75Amps/contact max.

Contact resistance: $\leq 20m\Omega$ /contact

Insulation resistance: $\geq 1000M\Omega$ at V=100V

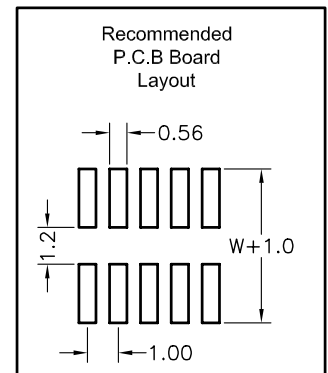
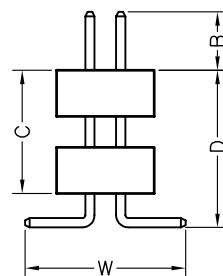
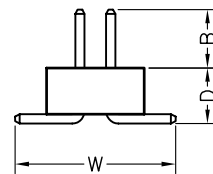
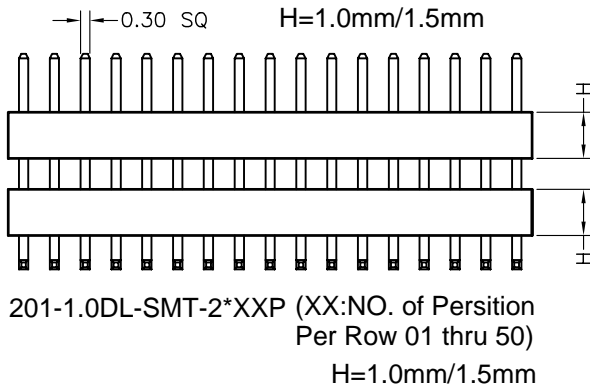
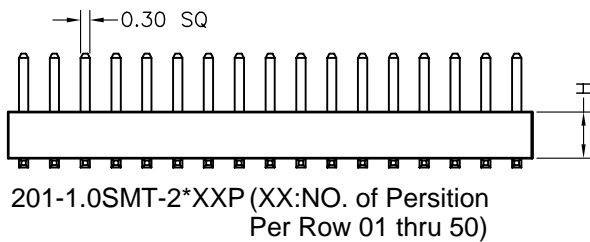
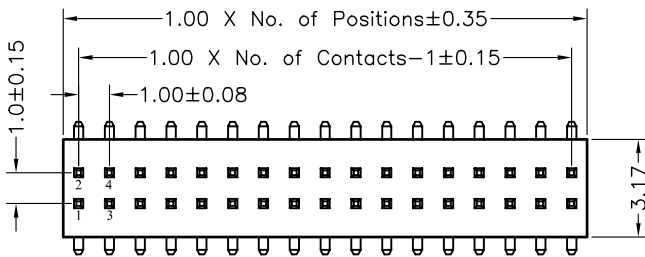
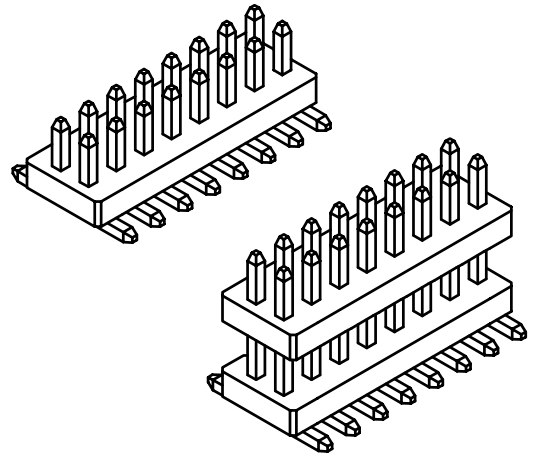
Withstanding Voltage: 300V AC/minute

Mechanical:

Operating temperatures: Gold Plated: -55° C to +105° C

Tin plated: -40° C to +105° C

Soldering temperature: +260° C, 10s max.



Pitch: 1.00*1.00mm(0.039*0.039")

Pin Header Dual Row With Post S.M.T Type

Technical Data

Material:

Contact Material: Brass

Insulator Material: Black Polyester UL94V-0

Standard: PA6T+30%G.F

Electrical:

Current rating: 0.75Amps/contact max.

Contact resistance: $\leq 20m\Omega$ /contact

Insulation resistance: $\geq 1000M\Omega$ at V=100V

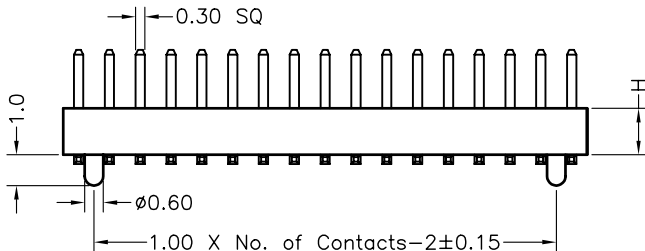
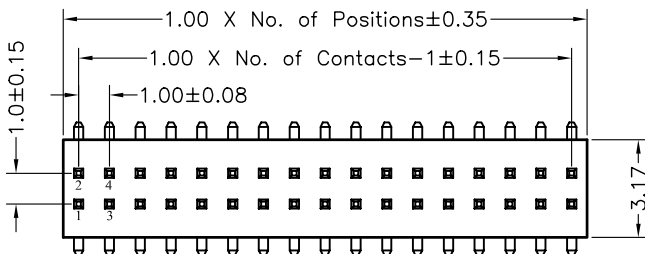
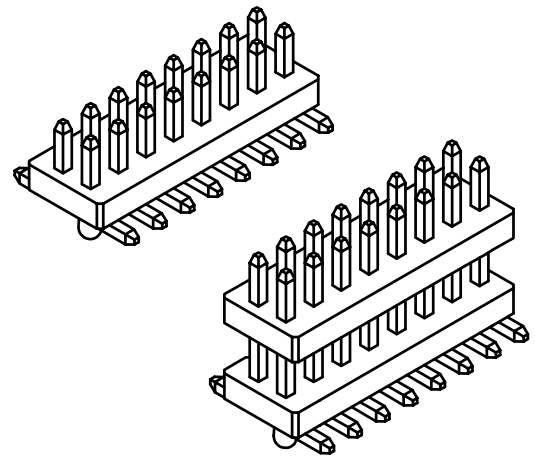
Withstanding Voltage: 300V AC/minute

Mechanical:

Operating temperatures: Gold Plated: -55° C to +105° C

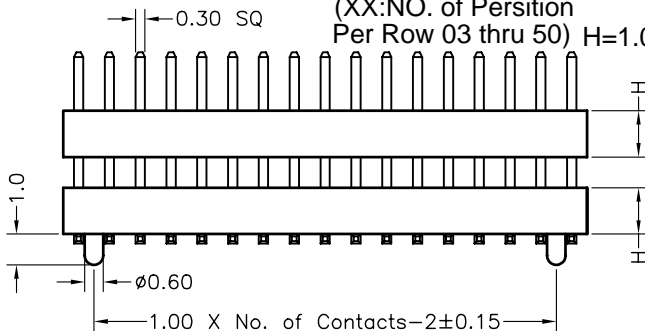
Tin plated: -40° C to +105° C

Soldering temperature: +260° C, 10s max.



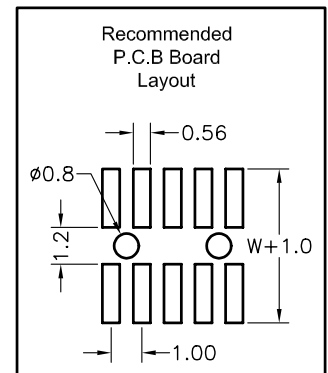
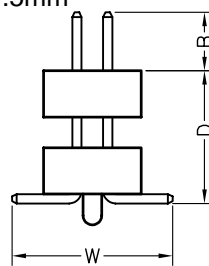
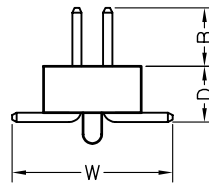
201-1.0SMT-2*XXP (With Location Column)

(XX:NO. of Persition
Per Row 03 thru 50) H=1.0mm/1.5mm



201-1.0DL-SMT-2*XXP (With Location Column)

(XX:NO. of Persition
Per Row 03 thru 50) H=1.0mm/1.5mm



Pitch: 1.00*1.00mm(0.039*0.039")

Female Header Dual Row Straight Dip Type

Technical Data

Material:

Contact Material: Brass

Insulator Material: Black Polyester UL94V-0

Standard: PA6T+30%G.F

Electrical:

Current rating: 0.75Amps/contact max.

Contact resistance: $\leq 20\text{m}\Omega$ /contact

Insulation resistance: $\geq 1000\text{M}\Omega$ at $V=100\text{V}$

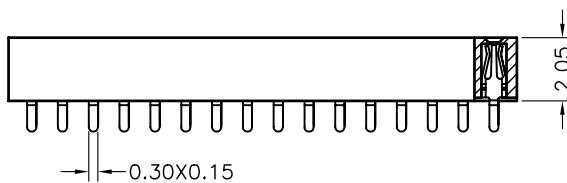
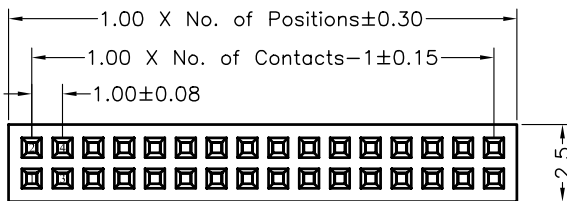
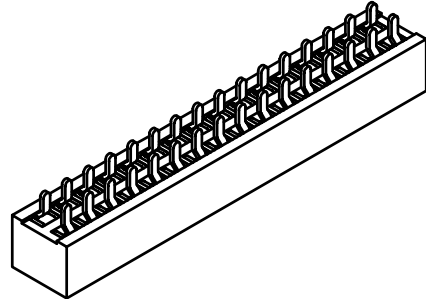
Withstanding Voltage: 300V AC/minute

Mechanical:

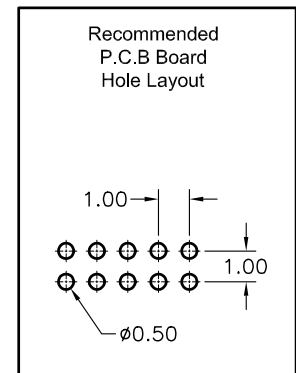
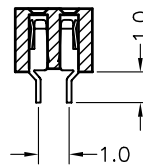
Operating temperatures: Gold Plated: -55°C to $+105^\circ\text{C}$

Tin plated: -40°C to $+105^\circ\text{C}$

Soldering temperature: $+260^\circ\text{C}$, 10s max.



203-1.0-2*XXP (XX:NO. of Persition Per Row 03 thru 50)



Pitch: 1.00*1.00mm(0.039*0.039")

Female Header Dual Row S.M.T Type

Technical Data

Material:

Contact Material: Brass

Insulator Material: Black Polyester UL94V-0

Standard: PA6T+30%G.F

Electrical:

Current rating: 0.75Amps/contact max.

Contact resistance: $\leq 20m\Omega$ /contact

Insulation resistance: $\geq 1000M\Omega$ at $V=100V$

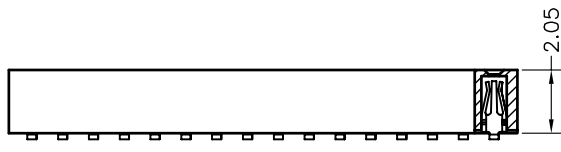
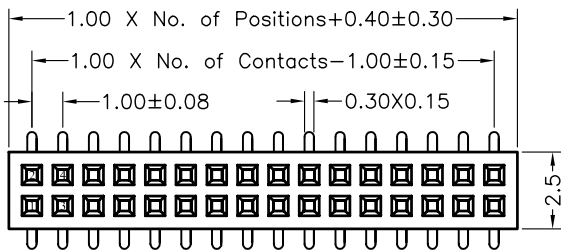
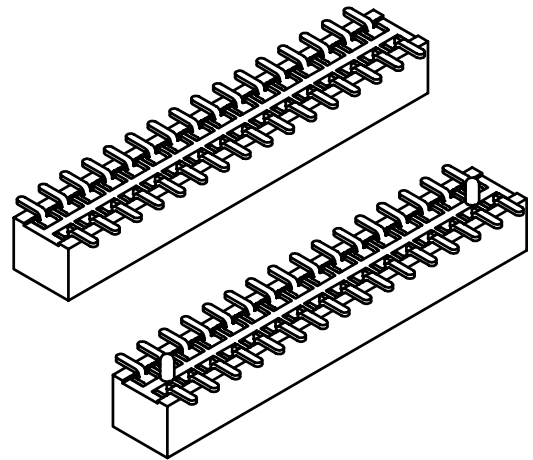
Withstanding Voltage: 300V AC/minute

Mechanical:

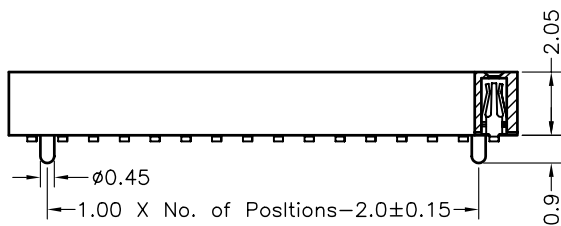
Operating temperatures: Gold Plated: $-55^{\circ}C$ to $+105^{\circ}C$

Tin plated: $-40^{\circ}C$ to $+105^{\circ}C$

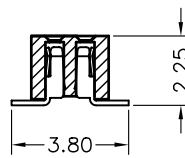
Soldering temperature: $+260^{\circ}C$, 10s max.



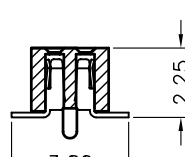
203-1.0SMT-2*XXP (XX:NO. of Persition Per Row 03 thru 50)



203-1.0SMT-2*XXP (With Location Column)
(XX:NO. of Persition Per Row 03 thru 50)



Type 1



Type 2

