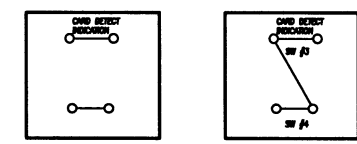
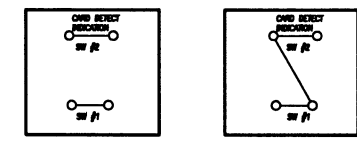
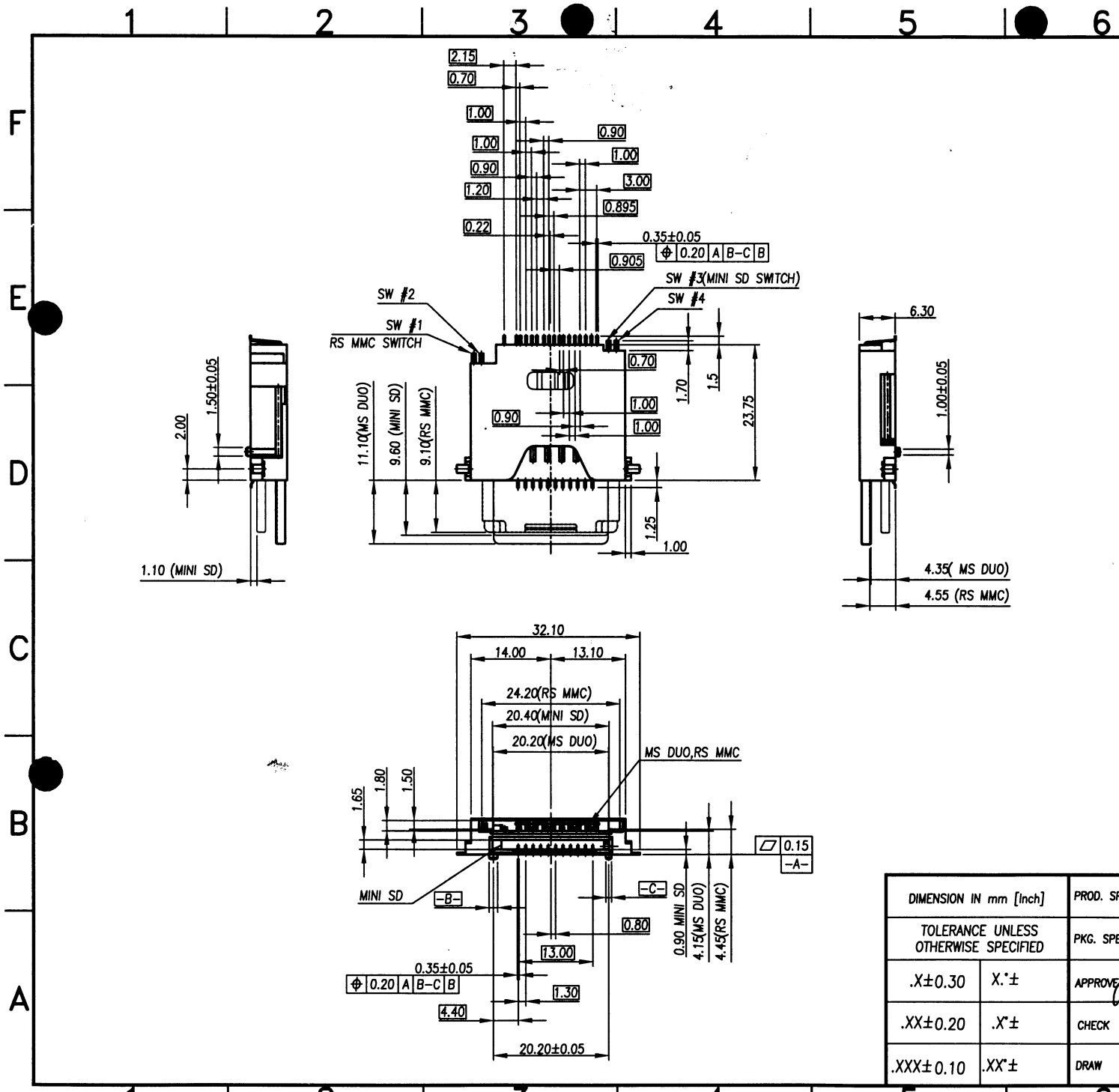


REV	MODIFICATION	DATE	DRAW
B	EN-04-0619	06/10/04	JIM LIU
C	EN-04-1206	12/01/04	JIM LIU

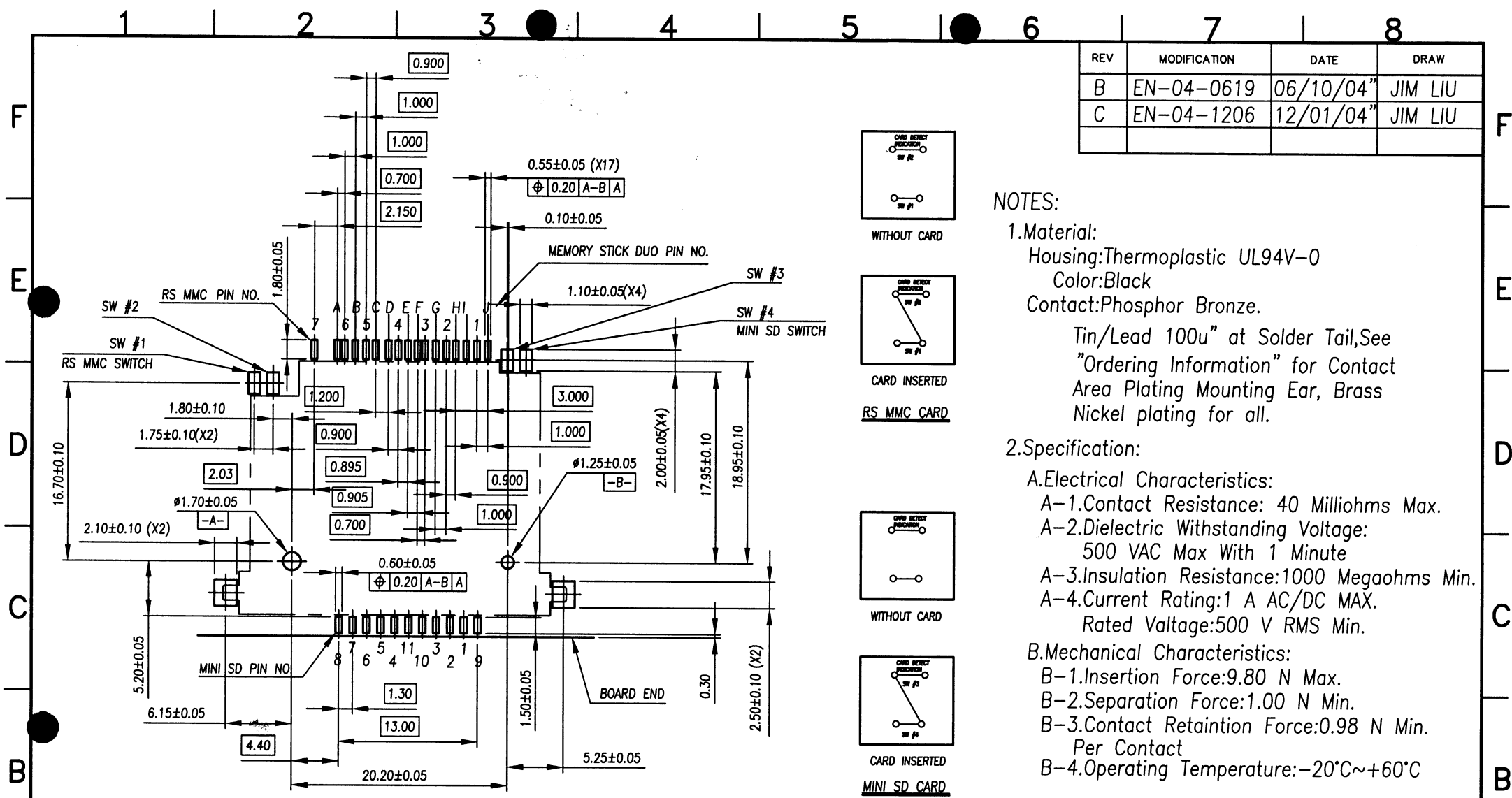


Ordering Information:
AIO3X-228XXBXX0

Contact Area Plating:
 05--5u" Gold Plating
 10--10u" Gold Plating
 15--15u" Gold Plating

0 : WITHOUT LOGO
 1 : WITH LOGO
 0 : TIN-LEAD.
 T : LEAD FREE.

DIMENSION IN mm [Inch]		PROD. SPEC. SP0073	
TOLERANCE UNLESS OTHERWISE SPECIFIED		PKG. SPEC. PPP-A0-002	
.X±0.30	X'.±	APPROVE	
.XX±0.20	.X'.±	CHECK	
.XXX±0.10	.XX'.±	DRAW	
		TITLE RS MMC,MS DUO,MINI SD 3 IN 1 MINI. CONNECTOR	
		CUSTOMER DRAWING	
		FILE NO. KFP-073	DWG NO. AIO3X-228XXBXX0
		SIZE A4	PROJ. SHEET 1 / 2
		SCALE 1:1	REV C



P.C.B Layout(TOP VIEW)

RS MMC		MINI SD		MS DUO	
PIN	NAME	PIN	NAME	PIN	NAME
1	CD/DAT3	1	CD/DAT3	A	VSS
2	CMD/DI	2	CMD/DI	B	BS
3	VSS1	3	VSS1	C	VCC
4	VDD	4	VDD	D	SDIO
5	CLK/SCLK	5	CLK/SCLK	E	Reserved
6	VSS2	6	VSS2	F	INS
7	DAT0	7	DAT0	G	Reserved
		8	DAT1	H	SCLK
		9	DAT2	I	VCC
		10		J	VSS
		11			

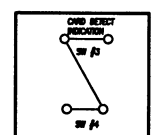
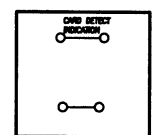
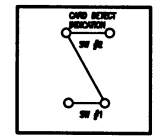
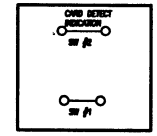
REV	MODIFICATION	DATE	DRAW
B	EN-04-0619	06/10/04	JIM LIU
C	EN-04-1206	12/01/04	JIM LIU

NOTES:

- Material:
Housing:Thermoplastic UL94V-0
Color:Black
Contact:Phosphor Bronze.
Tin/Lead 100u" at Solder Tail,See "Ordering Information" for Contact Area Plating Mounting Ear, Brass Nickel plating for all.

2.Specification:

- Electrical Characteristics:
A-1.Contact Resistance: 40 Milliohms Max.
A-2.Dielectric Withstanding Voltage: 500 VAC Max With 1 Minute
A-3.Insulation Resistance:1000 Megaohms Min.
A-4.Current Rating:1 A AC/DC MAX.
Rated Voltage:500 V RMS Min.
- Mechanical Characteristics:
B-1.Insertion Force:9.80 N Max.
B-2.Separation Force:1.00 N Min.
B-3.Contact Retaintion Force:0.98 N Min. Per Contact
B-4.Operating Temperature:-20°C~+60°C



DIMENSION IN mm [Inch]		PROD. SPEC.	TITLE	
TOLERANCE UNLESS OTHERWISE SPECIFIED		SP0073	RS MMC,MS,MS DUO,MINI SD 3 IN 1 MINI. CONNECTOR	
.X±0.30	X'±	PKG. SPEC.	FILE NO. KFP-073	DWG NO. A103X-228XXBXX0
.XX±0.20	.X'±	PPP-A10-002	CUSTOMER DRAWING	
.XXX±0.10	.XX'±	APPROVE: <i>[Signature]</i>	PROJ.	SHEET 2 / 2
		CHECK: <i>[Signature]</i>	SCALE 2:1	REV C
		DRAW: <i>[Signature]</i>		