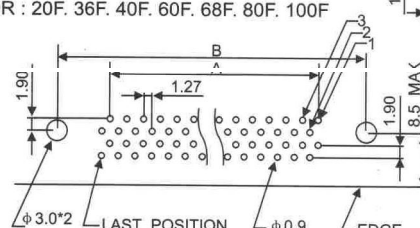
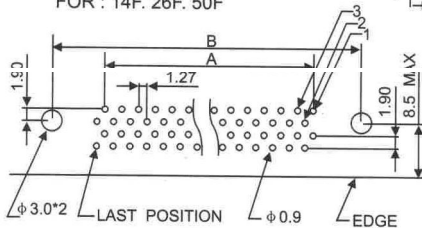
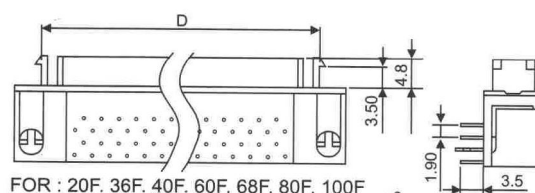
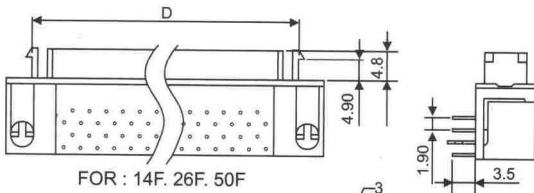
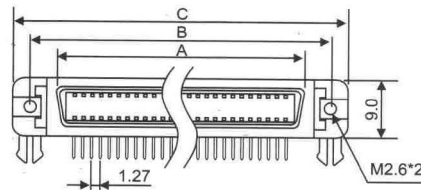
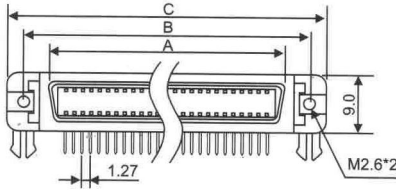
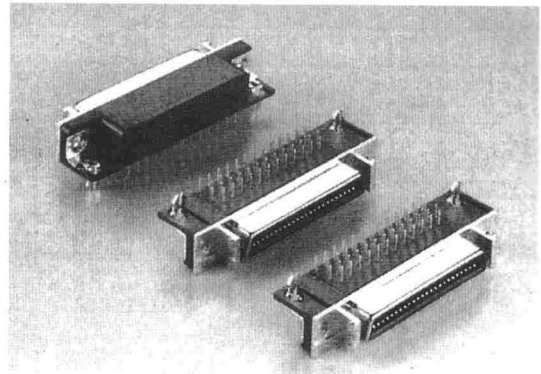


# SCSI II CENTRONIC PCB RIGHT ANGLE

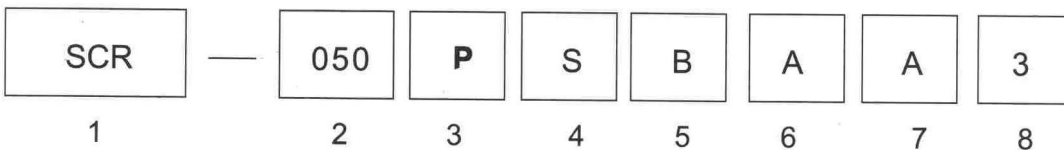
SCR Series

POSITION	A	B	C	D
14S	12.84	23.64	29.79	17.24
26S	20.46	1.26	37.41	24.86
50S	35.70	46.50	52.65	40.10

POSITION	A	B	C	D
20S	16.65	27.45	33.60	21.05
36S	26.81	37.61	43.76	31.21
40S	29.35	40.15	46.30	33.75
60S	42.05	52.85	59.00	46.45
68S	47.13	57.93	64.80	51.53
80S	54.75	65.55	71.70	59.15
100S	67.45	78.25	84.40	71.85



## Order Information



### 1.SERIES NO.

SCR

### 2.CONTACT NUMBER

014 020 026 036 040  
050 060 068 080 100

### 3.CONTACT TYPE

P=MALE  
S=FEMALE

### 4.CONTACT PLATING

S=SELECTIVE GLOD  
G=GOLD FLASH  
C=15 μ " GOLD  
D=30 μ " GOLD

### 5.PARTS OPTION

B=METAL SHELL

### 6.GROUNDING OPTION

A=W/BOARDLOCK  
B=W/2#56 THREAD L-SHAPE

### 7.SHELL TYPE OPTION

A=W/LATCH BLOCK(2#56)  
B=W/LATCH BLOCK(M3)  
C=W/LATCH BLOCK(4#40)  
D=W/ LATCH BLOCK(M2.6)  
E=W/O LATCH BLOCK(2#56)  
F=W/O LATCH BLOCK(4#40)  
G=W/O LATCH BLOCK(4#40)  
H=W/O LATCH BLOCK(M2.6)

### 8.INSULATOR COLOR

3=BLACK