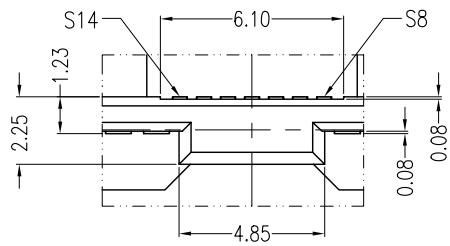
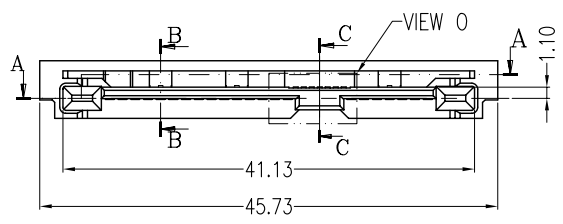


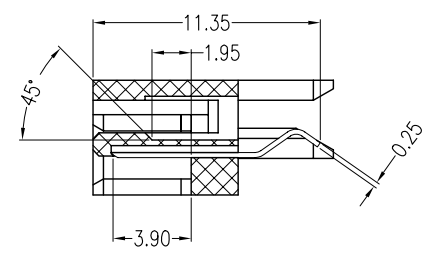
SECT A-A



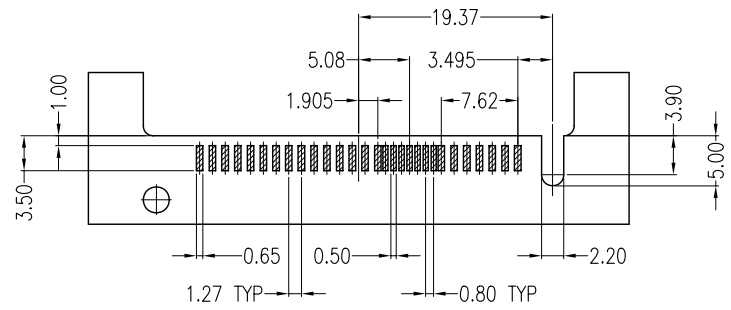
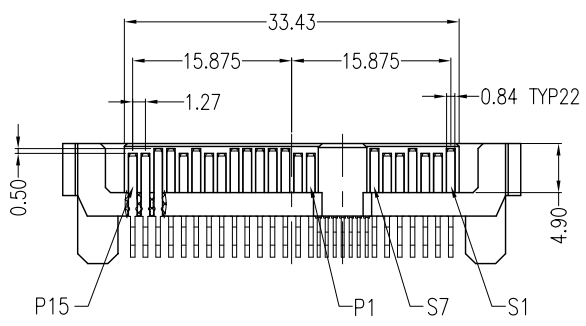
VIEW O
SCALE 3:1



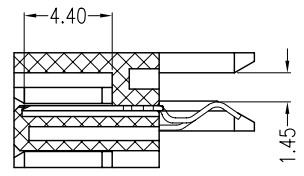
VIEW O



SECT B-B
SCALE 2:1



P.C.B LAYOUT (T=1.60mm)



SECT C-C
SCALE 2:1

NOTES:

***Material**

Housing: LCP, UL 94V-0 rated, Color: Black;
Contact: Brass;
Plating: Gold plating over Nickel on contact area; Tin plating on solder tail.

***Mechanical**

Insertion Force: 25N max.
Withdrawal Force: 5N min.
Durability: 500 cycles

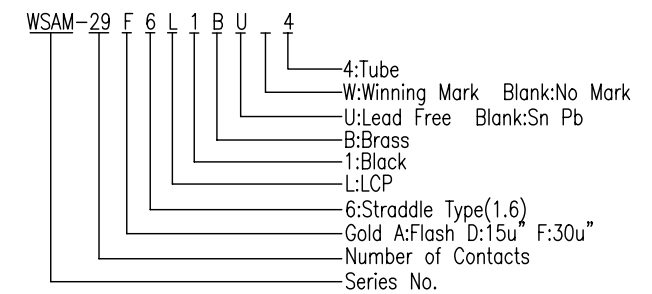
***Electrical Specification**

Current Rating: 1 Ampere per contact;
Contact Resistance: 30 Milliohms max.
Insulation Resistance: 1000 megohms min.
Dielectric Withstanding Voltage: 500 V AC.

***Environmental**

Operating Temperature: 0°C to +55°C

***How to order**



REV		Drawing By		Data		Date		Title	
Units	mm	Scale	5:4	Stacy				SAS 29P Straddle	
Tolerance Unless Otherwise Specified				Reviewed By		Data		Type(1.6) Male	
.X	~	±0.38		Roger				Sheet 1 of 1	
.XX	~	±0.25		Approval By		Data		Third Angle Projection	
.XXX	~	±0.20		Richard				Drawing No. WSAM-29PS-AN-N143	
Angle	~	± 3°						REV A	