

NOTES:

***Material**

Housing: LCP, UL 94V-0 rated, Color: Black;
 Contact: Brass;
 Plating: Gold plating over Nickel on contact area; Tin plating on solder tail.

***Mechanical**

Insertion Force: 25N max.
 Withdrawal Force: 5N min.
 Durability: 500 cycles

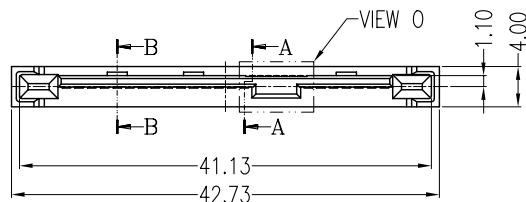
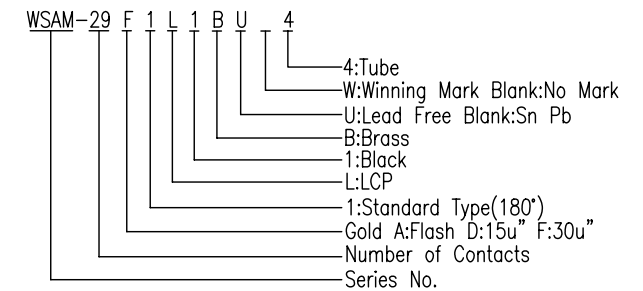
***Electrical Specification**

Current Rating: 1 Ampere per contact;
 Contact Resistance: 30 Milliohms max.
 Insulation Resistance: 1000 megohms min.
 Dielectric Withstanding Voltage: 500 V AC.

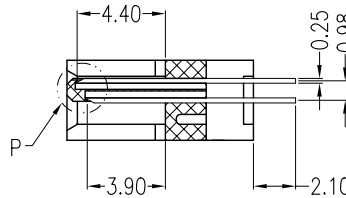
***Environmental**

Operating Temperature: 0°C to +55°C

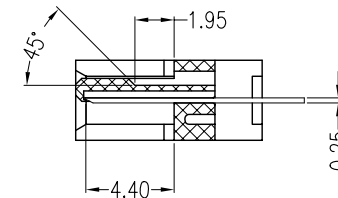
***How to order**



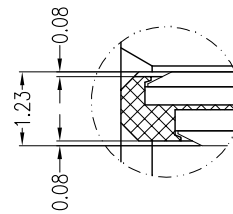
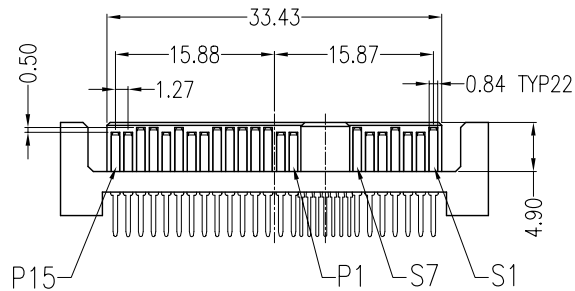
VIEW O
SCALE 3:1



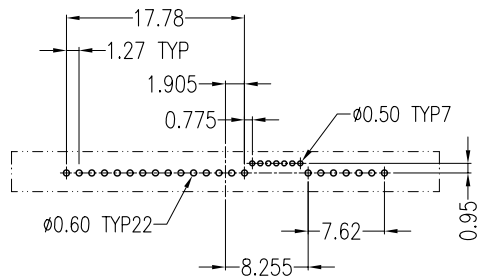
SECT A-A
SCALE 2:1



SECT B-B
SCALE 2:1



VIEW P
SCALE 6:1



PCB LAYOUT
TOP VIEW

REV	Modify Insertion Force, accord with the SFF-8482 REV 1.9.				
Units	mm	Scale	5:4	Drawing By	Data
				Stacy	
	Tolerance Unless Otherwise Specified			Reviewed By	Data
.X	~	±0.38		Roger	
.XX	~	±0.25		Approval By	Data
.XXX	~	±0.20		Richard	
Angle	~	± 3°			
				Date	
				Sheet	1 of 1
				Third Angle Projection	
				Title	SAS 29P Standard Type(180°) Male
				Drawing No.	WSAM-29PS-AN-N133
				REV	C