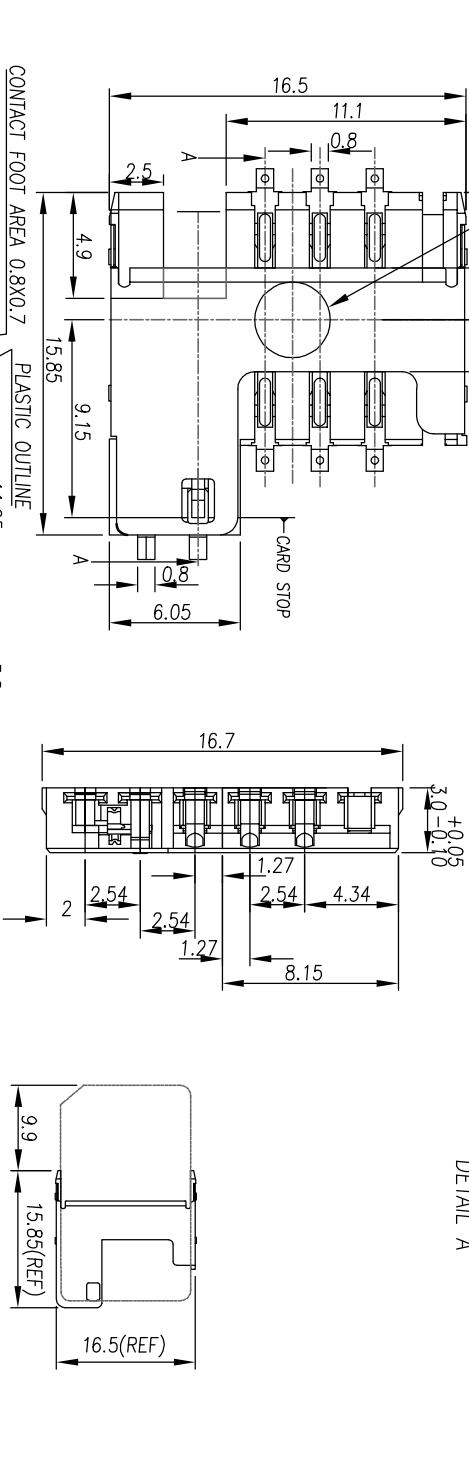
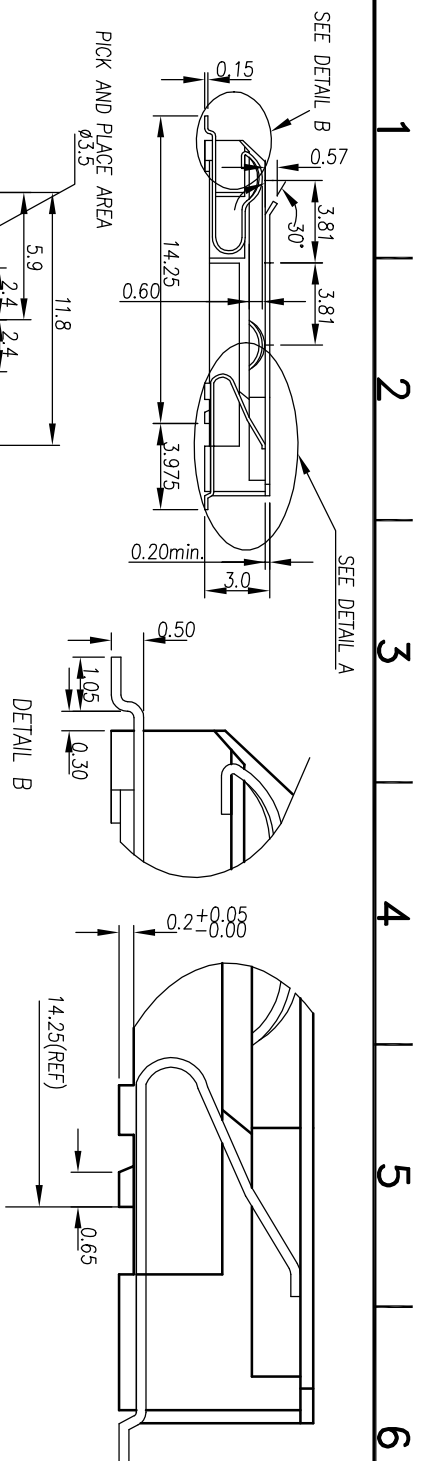


REV	MODIFICATION	DATE	DRAW
B	EN-05-0623	94/06/10	JOAN
C	EN-06-0421	95/04/17	TERENCE
D	EN-06-0508	95/05/09	TERENCE

NOTES:

- General Characteristics
Dimensions: 15.85L X 16.50W X 3.00H mm
Weight: Approx. 0.65g
Contact principle: Friction technology
Operating position: Shaft up/Down/Horizontal
Mounting System: SMT without post
Durability: 10,000 cycles min.
- Mechanical Characteristics:
Insulation Material: Thermoplastic, UL94V-0.
- Electrical Characteristics
Number of contacts: 6 pins
Contact resistance: 50 megohms typical, 100 megohms max.
Insulation resistance: >1000 megohms / 500 VDC
- Solderability
Wave: Not applicable
Vapor phase: 215°C, 30 sec. MAX.
IR reflow: 230°C, 10~15 sec. MAX.
Manual soldering: 360°C, 3 sec. MAX.
- Environmental Characteristics
Operating temperature: -40°C ~ +85°C
Operating humidity: 10% ~ 95% RH
Storage temperature: -40°C, +85°C
Storage humidity: 10% ~ 95% RH
Thermal shock: -40°C ~ +85°C, 5 cycles
Damp Heat: 40°C, 90% RH, 500HR
Salt-mist: 35°C, 5%, NaCl, 48H
- ORDER INFORMATION
SIMMP-00630B009



ORDER INFORMATION
SIMMP-00630B X 09

PLATING:
01: GOLD FLASH
T1: LEAD FREE

0: TUBE PACKING
R: REEL PACKING

DIMENSION IN mm [inch]

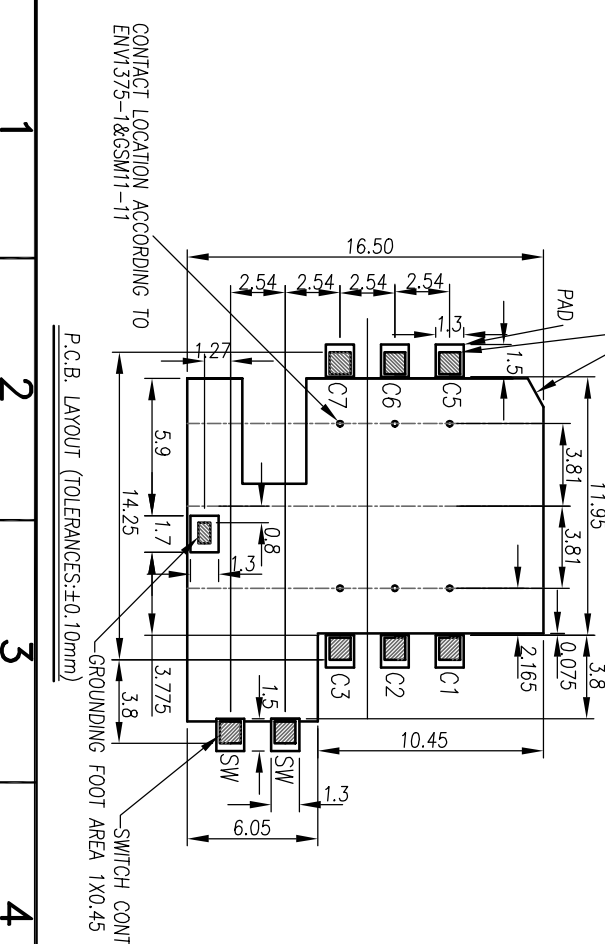
PROD. SPEC.

TOLERANCE UNLESS OTHERWISE SPECIFIED	PKG. SPEC.
.X±	.X±
.XX±	.X±
.XXX±	.XX±

FILE NO.	DWG NO.	PROJ. NO.	SCALE	SHEET 1	REV
	SIMMP-00630B009		2.8:1	1	D

TITLE SIM CARD CONNECTOR

CUSTOMER DRAWING



CONTACT FOOT AREA 0.8X0.7

PLASTIC OUTLINE

CONTACT LOCATION ACCORDING TO EN1375-1&6SMT1-11

P.C.B. LAYOUT (TOLERANCES: ±0.10mm)

GROUNDING FOOT AREA 1X0.45

SWITCH CONTACT FOOT AREA 0.8X1

PROJ. NO.	DWG NO.	PROJ. NO.	SCALE	SHEET 1	REV
	SIMMP-00630B009		2.8:1	1	D

CUSTOMER DRAWING