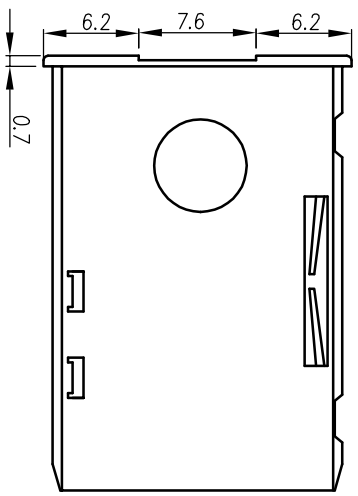
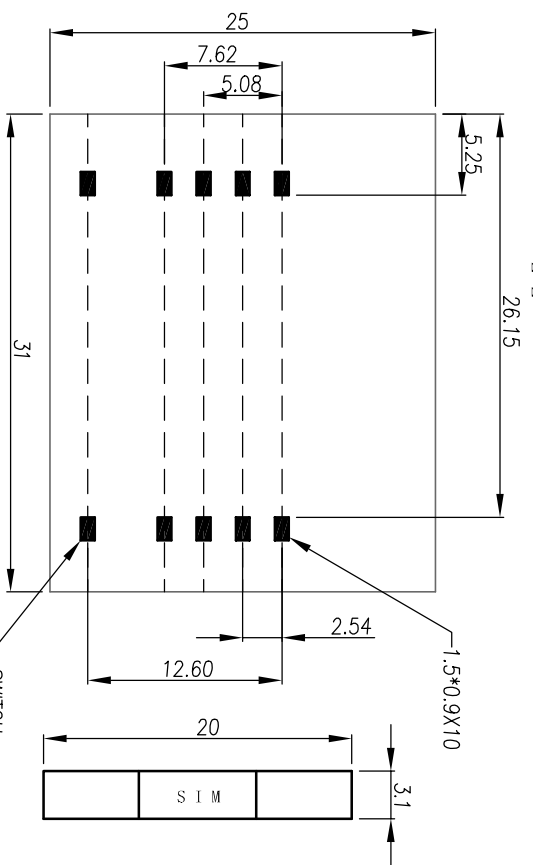
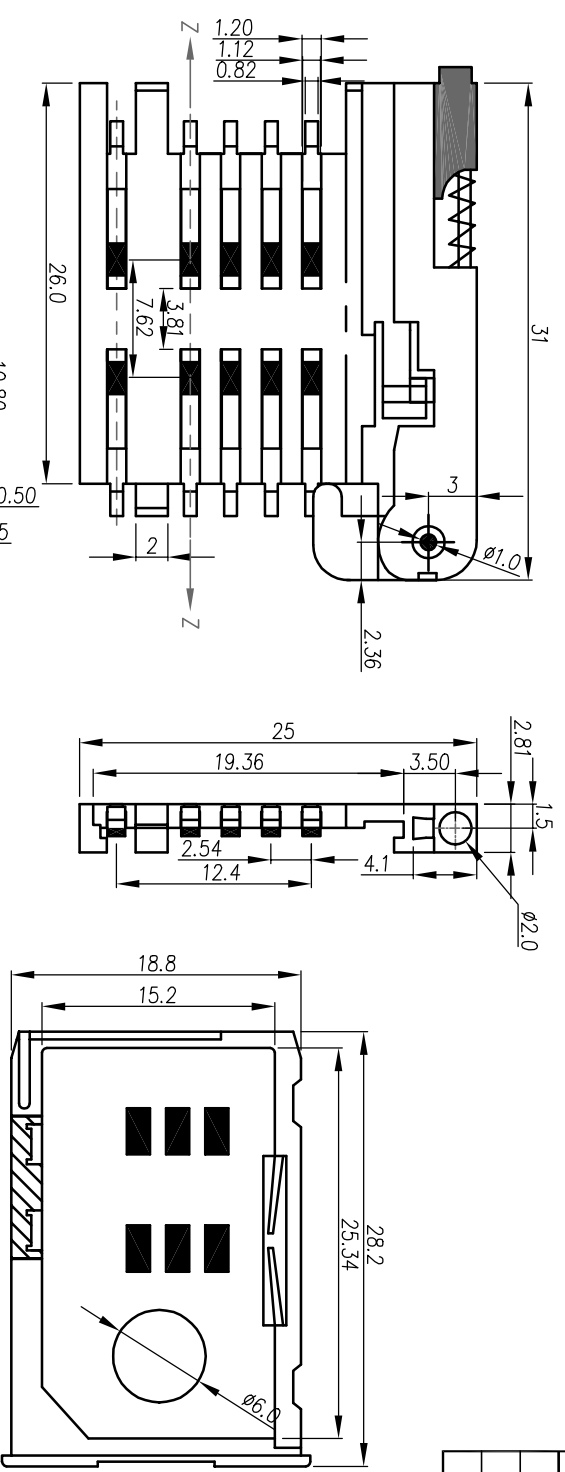


REV	MODIFICATION	DATE	DRAW
B	EN-06-1125	95/11/27	TERENCE



- Specification:
- * Withstanding Voltage: 500V DC /1M.
 - * Insulation Resistance: 1000M Ohm
 - * Voltage Rating: 5V AC
 - * Current Rating: 0.5A/Product Max.
 - * Contact Resistance: 60m Ohm Max.
 - * Operating Temperature: -25°C ~ +85°C
 - * Insertion Cycles: 10000 Times Min
 - * Press Force: 0.2N~0.6N

Material and Finish:

- * Housing: LCP+30%G.F. UL 94V-0, Black
- * Contact: Copper Alloy
- * Contact Area: Gold Plating All Over Ni

ORDER INFORMATION:

- SIMP-P XX XX BT X 0
- NO. OF CONTACTS: 06: 6PIN, 08: 8PIN
 - Plating: 10: 10u", 30: 30u"
 - Packing: 0: Tube, R: Tape & Reel

DIMENSION IN mm [inch]	TOLERANCE UNLESS OTHERWISE SPECIFIED	PROD. SPEC.	PKG. SPEC.
X±0.30	X.±	APPROVE	
.XX±0.20	.X.±	CHECK	
.XXX±0.10	.XX.±	DRAW	

FILE NO. SIM-KF016	DWG NO. SIMMP-PXXXXBTX0	SIZE A4	SCALE 2:1	PROJ.	SHEET 1
TITLE SIM CARD CONN. PUSH-IN/OUT		CUSTOMER DRAWING			
TITLE SMT TYPE					

